

MISC. ORDER NO. 2018-9

In the County Court of Craighead County, Arkansas

In the matter of awarding bids for the purchase of precut  
and preformed concrete reinforcing steel.

**FILED**

**JAN 29 2018**

**KADE HOLLIDAY**  
COUNTY & PROBATE COURT CLERK

ORDER

Comes before the County Court of Craighead County, Arkansas, the matter of awarding bids for the purchase of precut and preformed concrete reinforcing steel to be used by the Craighead County Road Department in the precast concrete bridge program.

Bids were advertised and publicly opened in accordance with Arkansas Code 14-22-101 through 14-22-115, concerning purchasing and bidding procedures.

It is therefore, considered, ordered, and adjudged that the low and best bid of \$46.75 per hundred weight with a total of 45,000 lbs for a total cost of \$21,037.50, be accepted from Arkansas Rebar/Darragh, 1222B Airplane Dr, Benton, AR 72015.

Dated this 26<sup>th</sup> Day of January, 2018

Approved: \_\_\_\_\_

Ed Hill

Craighead County Judge

FROM:

Craighead County Purchasing Department  
c/o County Judges Office  
511 Union Rm 119  
Jonesboro, AR 72401  
Phone 870-933-4500  
Fax 870-933-4504

**PURCHASE ORDER**  
**CRAIGHEAD COUNTY**  
**ARKANSAS**

**SHOW THIS NO. ON ALL INVOICES,  
DELIVERY SLIPS, CASES, BOXES, ETC**

PURCHASE  
ORDER

**50397**

TO: Arkansas Rebar/Darrack  
1222 B Air Lane Drive  
Benton, AR 72015

DATE

1-24-18

Req. By

Mike Crum

Req. #

2018-2

Bid No.

Charge to

Account No.

2000.0200.2031

Gentlemen: Please furnish the following to Craighead County and be governed by the instructions hereon.

ITEM	QUAN.	BRAND, CATALOG NO. AND DESCRIPTION	UNIT PRICE	TOTAL
	<u>45,000#</u>	Rebar steel, pre-cut, pre-formed and delivered to Jonesboro, AR 72401 Bridge steel to make 7 bridges, with 7 panels per bridge, total of 49 bridge panels Use 1 piece "Rib Bar" as noted in item 9 All steel & fabricating procedures shall be in accordance and meet all bid specs and use the one piece Rib Bar as outlined in specs Slab panel bridge steel Package & bundle steel in a manner to prevent damage to steel & to facilitate off-loading * Note: Road Shop is closed on Fridays	<u>46.75/cwt</u>	<u>\$21,037.50</u>

TOTAL

SHIP TO:

Craighead County Road Dept.  
2800 Moore Rd  
Jonesboro, AR 72401

DEL. PROMISED

DEL. REQUIRED

TERMS:

F.O.B.

PRICING:

No purchases over \$100.00 are valid unless covered by this form signed by Purchasing Agent. Submit invoice promptly to County Clerk, Craighead County Court House, P.O. Box 1167, Jonesboro, AR 72401. The above Purchase Order No. must appear on all Invoices, Delivery Slips, Cases, Boxes, Etc. even when shipped direct by your supplier.

I certify that all the above articles or services have been received in good order except as noted.

Dated

20

Signed

**CRAIGHEAD COUNTY**

By

Cal Jam  
Purchasing Agent

# BID TABULATION SHEET

**Concrete Reinforcing steel pre-cut and pre-formed.**

**Bid 2018-2**

# County Road Department

DATE: January 23, 2018

Jonesboro, AR 72401

BIDDER NAME

ITEM BID

#s of steel

Price Per #

	Price Per 100#'s
_____	_____

**Freight**

Total Price

## CMC Rebar

## Rebar Steel, Slab, precut, preformed

6565 N. MacArthur Blvd, Ste 800

tving, TX 75039

**No Bid Received**

1

Arkansas Rebar/Darragh

Rebar Steel, Slab, precut, preformed

45,000

\$0.4675000

**\$46.75000**

\$0.00

**\$21,037.50**

1222B Airlane Dr

Benton, AR 72015

--	--

**Gerdau Ameristeel**

Rebar Steel, Slab, precut, preformed

155 Progress Road

Collerville, TN 38017

**Phone 901-853-8250**

Fax 901-853-4

John Boyuka

**CRAIGHEAD COUNTY  
INVITATION TO BID-NOT AN ORDER**

AL Haines  
870-933-4500

Craighead County Judge's Office  
511 Union St. Suite 119  
Jonesboro, Arkansas 72401

**PURCHASING OFFICE**

**BID NO. 2018-2**

DATE: January 10, 2018

Bids, subject to the conditions on the attached hereof, and as may be attached hereto, will be received at this office until 2:00 PM January 23, 2018 and then publicly opened, for furnishing the supplies, materials, and/or services as described below.

Bids will be opened January 23, 2018  
2:00 P.M. Local Time

FOB Jonesboro, Arkansas

BY: Al Haines

Maximum Delivery or completion time after issuance of Purchase

**PURCHASING DIRECTOR**

Order or work ordered by County 30days

Item #	DESCRIPTION	QUANTITY	UNIT	UNIT PRICE	AMOUNT
1	Concrete reinforcing steel pre-cut and pre-formed for use in Craighead County's concrete bridge program				
2	Bidder should return all pages of this bid package				
3	Sealed bids may be sent to this office at the address above.				
4	Bid must be signed by an authorized representative or bid will be rejected				
5	Does bidder meet all specifications? Yes _____ No _____ If no, please attach sheets explaining differences				
6	Craighead County will make payment within 30 days from delivery and acceptance by County				
7	Bidder should specify approximate ship date if awarded bid. Days _____				
8	Bidder should bid in per C# price with total number of lbs being bid to make up total truck load.				
9	Bidder should note the total pounds of steel here.	Total #s		<u>45,000</u>	
10	Bidder should note the total cost here.	Total \$		<u>21,037.50 (\$46.75/cwt)</u>	

**EXECUTION OF BID**

Date 01-22-18

We, the undersigned, have read all the requirements set forth in this bid proposal including specifications, conditions, and pertinent information regarding the articles being bid on, and we agree to furnish articles at the prices instructions, stated.

Arkansas use Tax Register No. 019242-78-001

Bidder AR REBAR/DARRAGH

Address 1222B AIRLANE DRIVE

By Mark Lumbert

City BENTON, AR 72015

(Person Authorized to Sign Bids)

Title ASSISTANT MANAGER

**UNSIGNED BIDS WILL BE REJECTED**

**BIDS ARE SUBJECT TO REJECTION UNLESS SUBMITTED ON THIS FORM**

**NOTICE TO BIDDERS, SEE REVERSE SIDE OR ATTACHMENTS FOR INSTRUCTIONS AND CONDITIONS.**

**CRAIGHEAD COUNTY  
JONESBORO, ARKANSAS**

**CONDITIONS OF BIDDING**

**Compliance with the following conditions is necessary for consideration of this bid.**

- 1 Signature-This bid must be signed with the firm name and by an authorized officer, employee or agent.
- 2 Sales Tax-Is not to be shown in the bid price, but is to be added by the vendor to the invoice billing to the County. The County is not exempt from Arkansas State Sales Tax. Contractors are to include all costs into the bid price, including applicable taxes.
- 3 Freight and other delivery charges-to destination at designated County facility in the County must be included in bid. Charges may not be added after the bid is opened. List freight and delivery charges separate.
- 4 Discounts-Show rate, total amount, and latest day any discounts will be allowed after receipt of article and invoice, otherwise County will deduct allowed discount when payment is made.
- 5 Firm Price-All prices quoted will remain firm for at least 30 days from date of bid, unless otherwise specified by the County or bidder
- 6 Identical Bids-In the event of two or more identical low bids, the contract may be awarded arbitrarily or for any reason to any of such bidders, or split in any proportion between the said two or more bidders at discretion of the County.
- 7 Clean up-Complete cleanup and proper disposal of any and all job related items is considered to be a part of any contract let by Craighead County.
- 8 Ambiguity in bid-Any ambiguity in any bid as the result of omission, error, lack of clarity or non-compliance specifications, instructions, and all conditions of bidding shall be construed in the light most favorable to the County
- 9 Construction  
A. When requested, the Contractor is to supply the County with evidence of having and maintaining proper and specifically Workman's Compensation Insurance in accordance with the laws of the State of Arkansas, Public Liability, and Property Damage. All premiums and cost shall be paid by Contractor. In no way will the County be responsible in case of accident.  
B. A Performance Bond equaling the total amount of any bid exceeding \$20,000 must be provided for erection of any public building, public structure, or public improvement(Pursuant to Arkansas Code 18-44-503.)
- 10 The County reserves the right to reject any and all bids, accept in whole or in part, to waive informalities in bids received, to accept bids on materials or equipment with variations from specifications in those cases where efficiency of operation will not be impaired, and unless otherwise specified by bidder, to accept any item in the bid. If unit prices and extensions thereof do not coincide, the County may accept the bid for the lesser amount whether reflected by extension or by the correct multiple of the unit price.

**INSTRUCTIONS TO BIDDERS**

(Please read carefully)

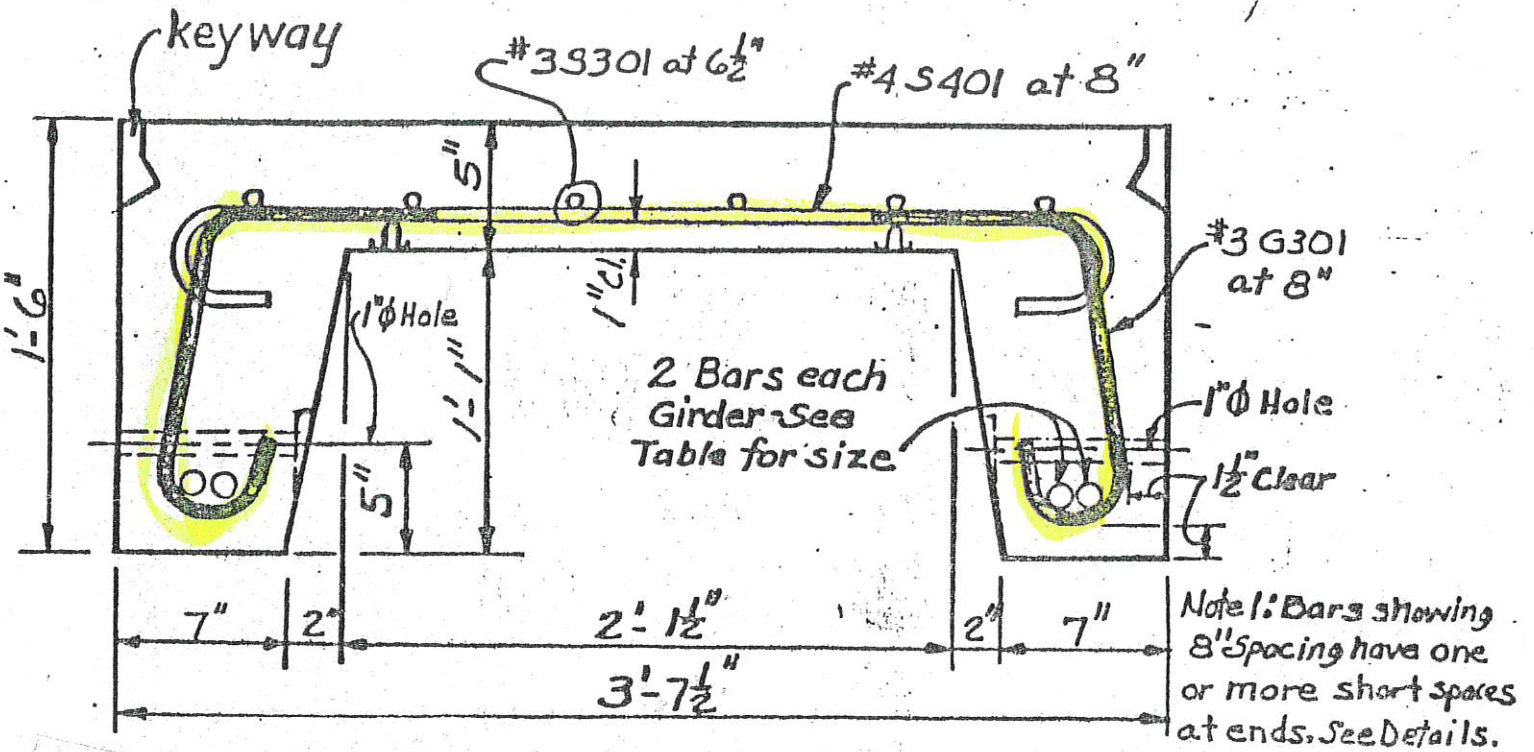
- 1 Submit bid on bid form attached or reverse side of this sheet.
- 2 Address all bids to: Purchasing Director, Craighead County Judge's Office, 511 Union St.; Suite 119, Jonesboro, Arkansas 72401 and make certain to indicate identifying bid number.
- 3 DO NOT include Federal Excise Tax in bid. County will furnish exemption certificate.
- 4 State Manufacturer, Brand Name, Model, etc. for each item bid on.
- 5 Samples of items, when required must be furnished free, and, if not called for within 30 days from date of bid opening, will be disposed of by the County
- 6 Bids received after stated time will not be considered.
- 7 Be sure and read all conditions and verify amounts before submitting bids. No changes or additions will be allowed after submission.
- 8 Guarantees and warranties should be attached as a part of the bid, as they may be a consideration in awarding contract.
- 9 Delivery or contract completion time is to be shown, as this date may, where time is of the essence, determine the contract award.
- 10 Additional information may be obtained from the Purchasing Department.

**THE COUNTY RESERVES THE RIGHT TO ACCEPT PART OR ALL OF ANY SPECIFIC BID OR BIDS  
AND TO ACCEPT BID WITH OR WITHOUT TRADE-IN, AND REJECT ANY AND ALL BIDS.**

	<b>Pre-cut and Pre-formed Concrete Reinforcing Bar Steel Specifications</b>				
1	Bidder should quote on one (1) full truck load of pre-cut and pre-formed concrete reinforcing bar to be used in the county's pre-cast concrete bridge program. (See attached sheets)				
2	Reinforcing bar shall be grade 60.				
3	Reinforcing bar is to be pre-cut and pre-formed according to attached specifications.				
4	The County will buy a full truck load delivered F.O.B. to the Craighead County Highway Department, 2800 Moore Road, Jonesboro, Arkansas 72401.				
5	The County would like to buy one (1) full truck load of reinforcing steel for 30 foot (30') span bridge units.				
6	Each 30 ft. bridge span will consist of seven (7) standard interior bridge panels to make one (1) complete bridge. <u>Craighead County is not using curb unit panels.</u>				
7	The bidder will need to calculate the number of thirty foot (30') spans, figuring seven (7) standard interior panels per complete bridge, to make up a complete truck load of steel reinforcing bars.				
8	Bidder should calculate number of interior standard panels to form complete bridge units.				
9	Bidder should quote the "Rib Bar": (Noted with asterisk ) in a one (1) piece bar that would be strong and perform as well as the three piece, and that being a #4 bar.				
10	The successful bidder should pack and ship the re-bar in a manner that will prevent damage and permit easy handling of the steel.				
11	Bidder should list the total pounds of steel making up the full truck load				
12	Any variations from the above specifications should be listed on a separate sheet of paper and attached to bid. This sheet should be labeled as such.				
13	Craighead County reserves the right to accept, reject, in whole or in part, to waive informalities in bids received, or accept bids with variations.				
14	Bidder should state the size of the <b><u>"One piece rib bar"</u></b> being proposed in Item #9 of specifications, if other than a #4 as required.				
15	All steel and fabricating procedures in this bid package should conform to and meet all Arkansas State Highway and Transportation Department specifications.				
16	Please include your email address and contact person.				



## PRECAST CONCRETE UNITS



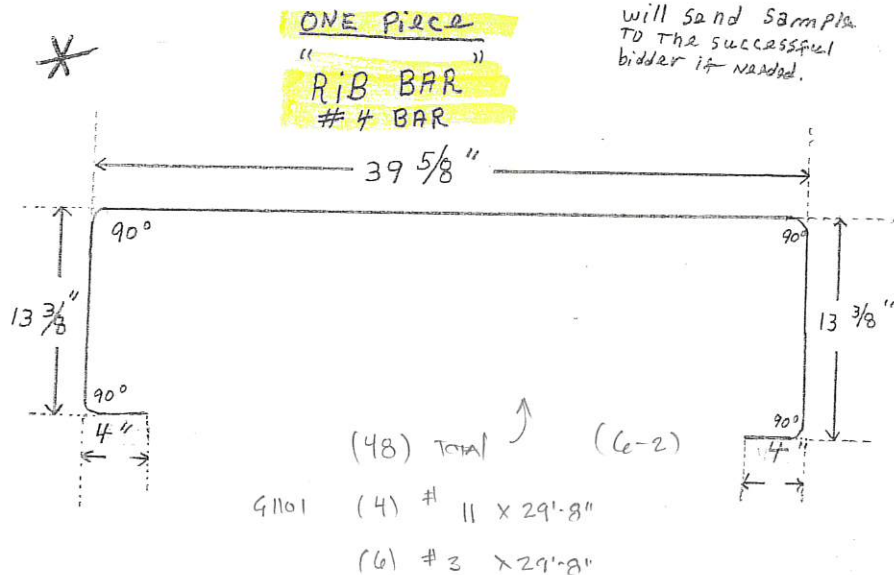
### CROSS SECTION - INTERIOR UNIT

GIRDER STEEL 20' Span: 1-#9 & 1-#8  
(Each girder) -

30' Span: 2. # 11

All Reinforcing Steel  
Shall be Grade 60  
All Concrete shall be 3500 psi  
at 28 Days

NFC A2



will send samples  
to the successful  
bidder if needed.

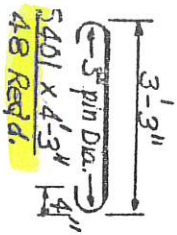
$$2 - 2^{5/3}$$

8

$$\frac{1}{2} \cdot 10^3 \text{ g}$$

3 5 7 9

62



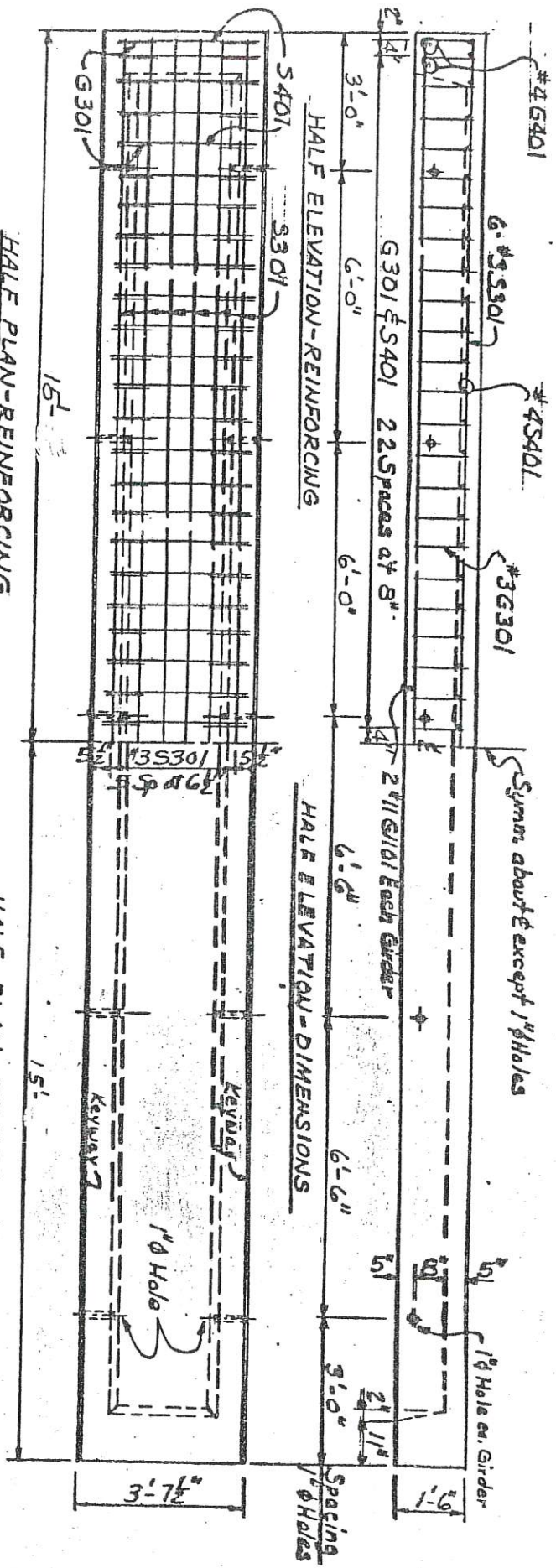
G1101 x 29' 8" Straight 4 Reqd.  
G 401 x 3'-3" Straight 4 Reqd.  
S 301 x 29' 8" Straight 6 Reqd.

All Reinforcing shall be ASTM A615 or A617 Grade 60.  
All Concrete Shall be 3500 psi at 28 Days.

**30' PRECAST CONCRETE SPAN**  
**INTERIOR UNIT**

**HALF PLAN-REINFORCING**  
Longitudinal Girder Steel Not Shown

**HALF PLAN-DIMENSIONS**



- (48) # 4 x (6'-2")
- (4) # 11 x 29'-8"
- (6) # 3 x 29'-8"
- (4) # 4 x 3'-3"

45,000 Full Truck

19 units For truck load

905 lbs




Craighead County Purchasing Department

January 23, 2018

Reference: Bid Package 2018-2

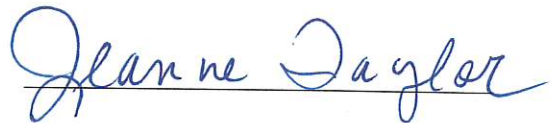
Concrete Reinforcing Steel for the Craighead County Road Department concrete bridge program.

This is to certify that only one (1) bid was received in reference to bid 2018-2, Concrete reinforcing steel.

A handwritten signature in blue ink, appearing to read "Al Haines", written over a horizontal line.

Al Haines

County Purchasing Agent

A handwritten signature in blue ink, appearing to read "Jeanne Taylor", written over a horizontal line.

Jeanne Taylor

Secretary to County Judge

# The Jonesboro Sun

DAILY AND SUNDAY

## Proof of Publication

STATE OF ARKANSAS  
COUNTY OF CRAIGHEAD

I, Lisa A. Lynn solemnly swear that I am classified director of the JONESBORO SUN daily newspaper of general circulation printed in the Western District of Craighead County and I was such classified advertising manager at the date of publication hereinafter stated, and that said newspaper had a bonafide circulation in such county at said dates, and had been regularly published in said county for the period of one month next before the date of the first publication of the advertisement hereto affixed, and that said advertisement was published in said

newspaper 1 times once a week for 1

weeks consecutively, the first insertion therein having been made on the

12 day of January, 2018

2nd insertion \_\_\_\_\_ day of \_\_\_\_\_

3rd insertion \_\_\_\_\_ day of \_\_\_\_\_

4th insertion \_\_\_\_\_ day of \_\_\_\_\_

5th insertion \_\_\_\_\_ day of \_\_\_\_\_

6th insertion \_\_\_\_\_ day of \_\_\_\_\_

7th insertion \_\_\_\_\_ day of \_\_\_\_\_

Lisa A. Lynn

Sworn to and subscribed before me this 12 day of January, 2018

My commission  
expires 9-6-22

Fee for print, \$ \_\_\_\_\_

Cost of Proof, \$ 81.25

Rec'd Payment \$ \_\_\_\_\_

Total - - \$ 81.25



518 Carson St. Jonesboro, AR 72401 • (870) 935-5525 • FAX (870) 935-1674

Nancy Robb