

FILED

JUN 29 2022

LESLI PENNY

COUNTY & PROBATE COURT CLERK

2022-52
MISC. ORDER NO. 52

In the County Court of Craighead County, Arkansas

In the matter of awarding bids for the purchase of precut
and preformed concrete reinforcing steel.

ORDER

Comes before the County Court of Craighead County, Arkansas, the matter of awarding bids for the purchase of precut and preformed concrete reinforcing steel to be used by the Craighead County Road Department in the precast concrete bridge program.

Bids were advertised and publicly opened in accordance with Arkansas Code 14-22-101 through 14-22-115, concerning purchasing and bidding procedures.

It is therefore, considered, ordered, and adjudged that the low and best bid of \$83.695 per hundred weight with a total of 47,912 lbs for a total cost of \$40,100.00, be accepted from Arkansas Rebar/Darragh, 1222B Airplane Dr, Benton, AR 72015.

Dated this 29th Day of June 2022

Approved: Marvin Day
Marvin Day
Craighead County Judge

AAB
182

FROM:

Craighead County Purchasing Department
c/o County Judge's Office
511 Union, Room 119
Jonesboro, AR 72401
Phone 870-933-4500
Fax 870-933-4504

VENDOR'S COPY

PURCHASE ORDER
CRAIGHEAD COUNTY
ARKANSAS

SHOW THIS NO. ON ALL INVOICES,
DELIVERY SLIPS, CASES, BOXES, ETC

PURCHASE
ORDER

55128

TO:

Arkansas Rebar
1222 B Airline Drive
Benton, AR 72015

DATE

6-28-22

Req. by:

John James

Req. No.:

Bid No.:

Bid 2022-23

Charge to

Account No.:

2000,0200-2031

Please furnish the following to Craighead County
and be governed by the instructions hereon.

ITEM	QUANTITY	BRAND, CATALOG NO. AND DESCRIPTION	UNIT PRICE	TOTAL
479124		Rebar Steel, product, performed and Delivered to Jonesboro, AR 72401 Bridge Steel to make 7 bridges, with 7 panels per bridge, total of 49 bridge panels. Use 1 piece "Rib Bar" as noted in Item 9 All steel + fabrication procedures shall be in accordance and meet all bid specs and using the "ONE PILE Rib Bar" as outlined in specs Steel shall be packaged + bundled to prevent damage and to facilitate off loading NOTE: Road shop is closed on Fridays All in accordance with bid specs 2022-23	\$3.695/CWT	

TOTAL/COST
\$40,100.00

TOTAL ►

SHIP TO:

Craighead County Road Dept,
2800 Moore Rd
Jonesboro AR 72401

DEL. PROMISED:

DEL. REQUIRED:

TERMS:

F.O.B.:

Destination

PRICING:


I certify that all the above articles or services have been received
in good order except as noted.

Dated _____ 20 _____

Signed _____

CRAIGHEAD COUNTY

By _____



Purchasing Agent

ARKANSAS REBAR
BRIAN CORBITT

bcorbitt@darraighcompany.com

CRAIGHEAD COUNTY
INVITATION TO BID-NOT AN ORDER

Craighead County Judge's Office
511 Union St. Suite 119
Jonesboro, Arkansas 72401

PURCHASING OFFICE

BID NO. 2022-23

501-315-7654

DATE: June 9, 2022

Bids, subject to the conditions on the attached hereof, and as may be attached hereto, will be received at this office until 2:00 PM June 28, 2022 and then publicly opened, for furnishing the supplies, materials, and/or services as described below.

Bids will be opened June 28, 2022
2:00 P.M. Local Time

FOB Jonesboro, Arkansas

Maximum Delivery or completion time after issuance of Purchase Order or work ordered by County 30 days.

BY: Al Haines
PURCHASING DIRECTOR

Item #	DESCRIPTION	QUANTITY	UNIT	UNIT PRICE	AMOUNT
1	Concrete reinforcing steel pre-cut and pre-formed for use in Craighead County's concrete bridge program				
2	Bidder should return all pages of this bid package				
3	Sealed bids may be sent to this office at the address above.				
4	Bid must be signed by an authorized representative or bid will be rejected				
5	Does bidder meet all specifications? Yes <u>X</u> No <u> </u> If no, please attach sheets explaining differences				
6	Craighead County will make payment within 30 days from delivery and acceptance by County				
7	Bidder should specify approximate ship date if awarded bid. Days <u>14 DAYS</u>				
8	Bidder should bid in per C# price with total number of lbs being bid to make up total truck load.				
9	Bidder should note the total pounds of steel here.				
10	Bidder should note the total cost here.				

Rebar Grade 60
Black 0000
#3 - 3,548 lbs Coated
#4 - 10,954 lbs
#11 - 33,419 lbs

Total #s 47,912 lbs
Total \$ 40,100.00

Forty Thousand One Hundred Dollars
EXECUTION OF BID and zero cents

Date 6/14/2022

Rib Bar 2R #4

We, the undersigned, have read all the requirements set forth in this bid proposal including specifications, conditions, and pertinent information regarding the articles being bid on, and we agree to furnish articles at the prices instructions, stated.

Arkansas use Tax Register No. 71-0042730

Bidder AR REBAR Address 1222 B Air Lane Drive
By BRIAN A. CORBITT City Benton, AR 72015
(Person Authorized to Sign Bids) Title Division Manager

UNSIGN BIDS WILL BE REJECTED

BIDS ARE SUBJECT TO REJECTION UNLESS SUBMITTED ON THIS FORM

NOTICE TO BIDDERS, SEE REVERSE SIDE OR ATTACHMENTS FOR INSTRUCTIONS AND CONDITIONS.

**CRAIGHEAD COUNTY
JONESBORO, ARKANSAS**

CONDITIONS OF BIDDING

Compliance with the following conditions is necessary for consideration of this bid.

- 1 Signature-This bid must be signed with the firm name and by an authorized officer, employee or agent.
- 2 Sales Tax-Is not to be shown in the bid price, but is to be added by the vendor to the invoice billing to the County. The County is not exempt from Arkansas State Sales Tax. Contractors are to include all costs into the bid price, including applicable taxes.
- 3 Freight and other delivery charges-to destination at designated County facility in the County must be included in bid. Charges may not be added after the bid is opened. List freight and delivery charges separate.
- 4 Discounts-Show rate, total amount, and latest day any discounts will be allowed after receipt of article and invoice, otherwise County will deduct allowed discount when payment is made.
- 5 Firm Price-All prices quoted will remain firm for at least 30 days from date of bid, unless otherwise specified by the County or bidder.
- 6 Identical Bids-In the event of two or more identical low bids, the contract may be awarded arbitrarily or for any reason to any of such bidders, or split in any proportion between the said two or more bidders at discretion of the County.
- 7 Clean up-Complete cleanup and proper disposal of any and all job related items is considered to be a part of any contract let by Craighead County.
- 8 Ambiguity in bid-Any ambiguity in any bid as the result of omission, error, lack of clarity or non-compliance specifications, instructions, and all conditions of bidding shall be construed in the light most favorable to the County.
- 9 Construction
 - A. When requested, the Contractor is to supply the County with evidence of having and maintaining proper and specifically Workman's Compensation Insurance in accordance with the laws of the State of Arkansas, Public Liability, and Property Damage. All premiums and cost shall be paid by Contractor. In no way will the County be responsible in case of accident.
 - B. A Performance Bond equaling the total amount of any bid exceeding \$20,000 must be provided for erection of any public building, public structure, or public improvement (Pursuant to Arkansas Code 18-44-503.)
- 10 The County reserves the right to reject any and all bids, accept in whole or in part, to waive informalities in bids received, to accept bids on materials or equipment with variations from specifications in those cases where efficiency of operation will not be impaired, and unless otherwise specified by bidder, to accept any item in the bid. If unit prices and extensions thereof do not coincide, the County may accept the bid for the lesser amount whether reflected by extension or by the correct multiple of the unit price.

INSTRUCTIONS TO BIDDERS

(Please read carefully)

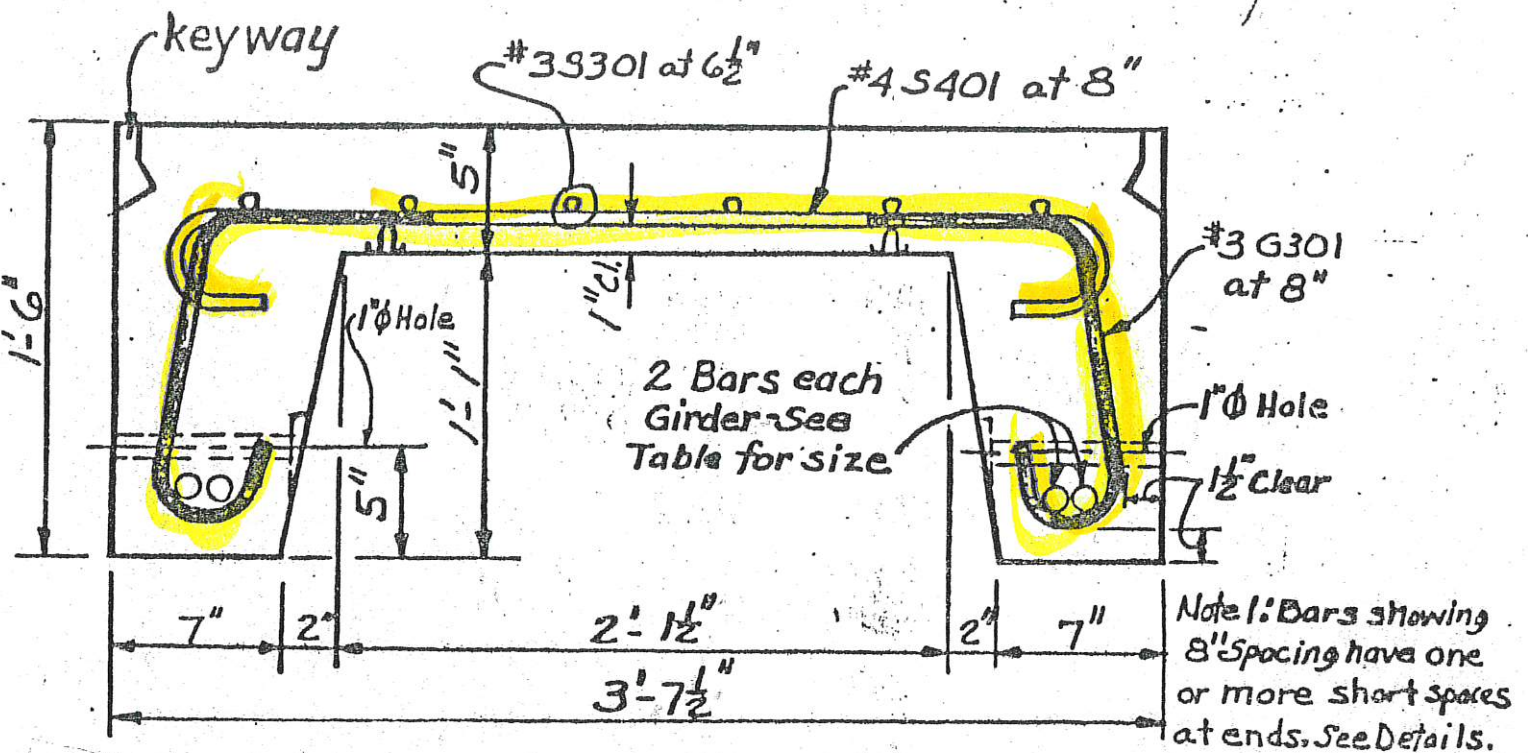
- 1 Submit bid on bid form attached or reverse side of this sheet.
- 2 Address all bids to: Purchasing Director, Craighead County Judge's Office, 511 Union St., Suite 119, Jonesboro, Arkansas 72401 and make certain to indicate identifying bid number.
- 3 DO NOT include Federal Excise Tax in bid. County will furnish exemption certificate.
- 4 State Manufacturer, Brand Name, Model, etc. for each item bid on.
- 5 Samples of items, when required must be furnished free, and, if not called for within 30 days from date of bid opening, will be disposed of by the County.
- 6 Bids received after stated time will not be considered.
- 7 Be sure and read all conditions and verify amounts before submitting bids. No changes or additions will be allowed after submission.
- 8 Guarantees and warranties should be attached as a part of the bid, as they may be a consideration in awarding contract.
- 9 Delivery or contract completion time is to be shown, as this date may, where time is of the essence, determine the contract award.
- 10 Additional information may be obtained from the Purchasing Department.

THE COUNTY RESERVES THE RIGHT TO ACCEPT PART OR ALL OF ANY SPECIFIC BID OR BIDS
AND TO ACCEPT BID WITH OR WITHOUT TRADE-IN, AND REJECT ANY AND ALL BIDS.

Pre-cut and Pre-formed Concrete Reinforcing Bar Steel Specifications

- 1 Bidder should quote on one (1) full truck load of pre-cut and pre-formed concrete reinforcing bar to be used in the county's pre-cast concrete bridge program. (See attached sheets)
- 2 Reinforcing bar shall be grade 60.
- 3 Reinforcing bar is to be pre-cut and pre-formed according to attached specifications.
- 4 The County will buy a full truck load delivered F.O.B. to the Craighead County Highway Department, 2800 Moore Road, Jonesboro, Arkansas 72401.
- 5 The County would like to buy one (1) full truck load of reinforcing steel for 30 foot (30') span bridge units.
- 6 Each 30 ft. bridge span will consist of seven (7) standard interior bridge panels to make one (1) complete bridge. Craighead County is not using curb unit panels.
- 7 The bidder will need to calculate the number of thirty foot (30') spans, figuring seven (7) standard interior panels per complete bridge, to make up a complete truck load of steel reinforcing bars.
- 8 Bidder should calculate number of interior standard panels to form complete bridge units.
- 9 Bidder should quote the "Rib Bar": (Noted with asterisk) in a one (1) piece bar that would be strong and perform as well as the three piece, and that being a #4 bar.
- 10 The successful bidder should pack and ship the re-bar in a manner that will prevent damage and permit easy handling of the steel.
- 11 Bidder should list the total pounds of steel making up the full truck load
- 12 Any variations from the above specifications should be listed on a separate sheet of paper and attached to bid. This sheet should be labeled as such.
- 13 Craighead County reserves the right to accept, reject, in whole or in part, to waive informalities in bids received, or accept bids with variations.
- 14 Bidder should state the size of the "One piece rib bar" being proposed in Item #9 of specifications, if other than a #4 as required.
- 15 All steel and fabricating procedures in this bid package should conform to and meet all Arkansas State Highway and Transportation Department specifications.
- 16 Please include your email address and contact person.

PRECAST CONCRETE UNITS



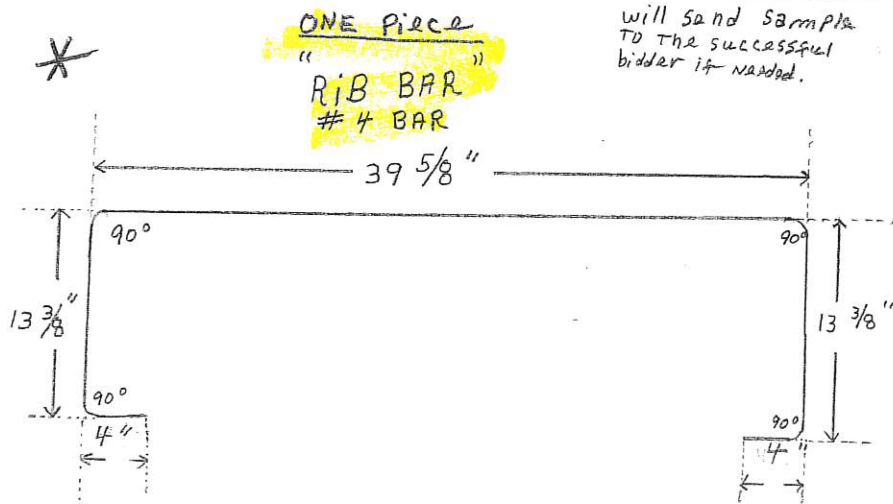
CROSS SECTION - INTERIOR UNIT

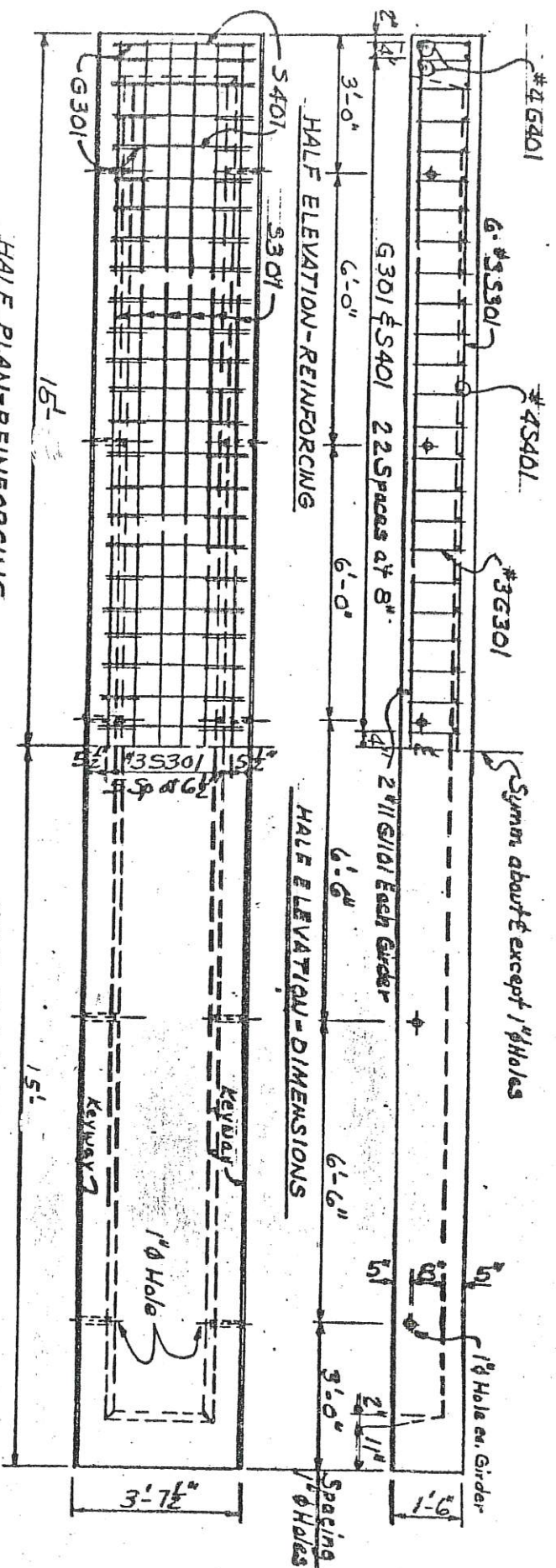
GIRDER STEEL 20' Span: 1-#9 & 1-#8
(Each girder)

30' Span: 2-#11

All Reinforcing Steel
Shall be Grade 60
All Concrete shall be 3500 psi
at 28 Days

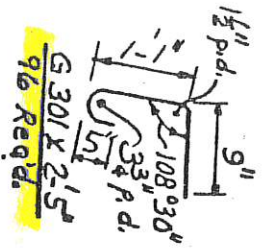
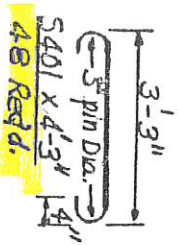
DEC 82





HALF PLAN-REINFORCING
Longitudinal Girder Steel Not Shown

HALF PLAN-DIMENSIONS



G1101 x 2'-9" 8" Straight 4 Reqd.
G401 x 3'-3" Straight 4 Reqd.
S301 x 2'-8" Straight 6 Reqd.

All Reinforcing shall be ASTM A615 or A617 Grade 60.
All Concrete shall be 3500 psi at 28 Days.

30' PRECAST CONCRETE SPAN
INTERIOR UNIT

Craighead County Purchasing Department

June 28, 2022

Reference: Bid Package 2022-23

Precut and preformed concrete bridge steel, slab panels.

This is to certify that only one (1) bid was received in reference to bid 2022-23,
Concrete bridge steel.



Al Haines

County Purchasing Agent



Lisa Lawrence

Administrative Official
to County Judge

AFFP

NOTICE TO BIDDERS Craighead C

RECEIVED

JUN 15 2022

FROM
CRAIGHEAD COUNTY
JUDGE'S OFFICE

Affidavit of Publication

STATE OF AR }
COUNTY OF CRAIGHEAD } SS

Matthew Smith, being duly sworn, says:

That he is Classified Director of the Jonesboro Sun, a daily newspaper of general circulation, printed and published in Jonesboro, Craighead County, AR; that the publication, a copy of which is attached hereto, was published in the said newspaper on the following dates:

June 11, 2022

NOTICE TO BIDDERS

Craighead County is now accepting bids until 2:00 PM, local time, June 28, 2022, at the Craighead County Judge's office for the following:

One truck load reinforcing concrete bridge slab steel, cut and formed.

Bid specifications may be picked up at the County Judge's office, Craighead County Courthouse Annex, 511 Union St, Suite 119, Jonesboro, Arkansas, Monday through Friday, from 8:00 A.M until 5:00 P.M.

Bids will be opened at 2:00 PM, June 28, 2022, local time, in the County Judge's office.

The County reserves the right to reject any and all bids or any part of any specific bid.

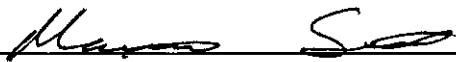
Bid specifications are available on the County Web Site at www.craigheadcounty.org

Al Haines
Purchasing Agent
Craighead County

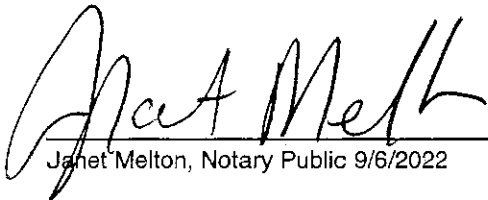
Publisher's Fee: \$ 78.00

That said newspaper was regularly issued and circulated on those dates.

SIGNED:



Subscribed to and sworn to me this 11th day of June 2022.


Janet Melton, Notary Public 9/6/2022

00013656 70388592

CRAIGHEAD COUNTY JUDGES OFFICE
511 UNION STE 119
JONESBORO, AR 72401

