

FILED

JAN 24 2022

LESLI PENNY

COUNTY & PROBATE COURT CLERK

MISC. ORDER NO. 2022-5

In the County Court of Craighead County, Arkansas

In the matter of awarding bids for the purchase of two (2) commercial Washer-Extractors and three (3) commercial grade natural gas dryers for the Craighead County Detention Facility.

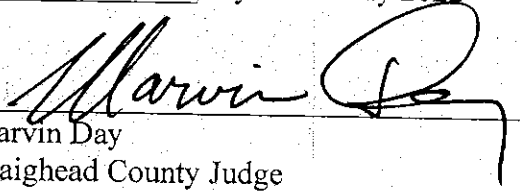
ORDER

Comes before the County Court of Craighead County, Arkansas, the matter of awarding bids for the purchase of two (2) commercial grade washer-extractor and three (3) commercial grade natural gas dryers to be used by the Craighead County Detention Facility.

Bids were advertised and publicly opened in accordance with Arkansas Code 14-22-101 through 14-22-115, concerning purchasing and bidding procedures.

It is therefore, considered, ordered, and adjudged that the best bid of \$63,528 be awarded to Pellerin Laundry Machinery Sales Co, Inc., 731 Jackson St. Kenner, LA 70063

Dated this 24th Day of January 2022

Approved: 

Marvin Day
Craighead County Judge

AA-12
598

FROM:

Craighead County Purchasing Department
c/o County Judge's Office
511 Union, Room 119
Jonesboro, AR 72401
Phone 870-933-4500
Fax 870-933-4504

VENDOR'S COPY

PURCHASE ORDER
CRAIGHEAD COUNTY
ARKANSAS

SHOW THIS NO. ON ALL INVOICES,
DELIVERY SLIPS, CASES, BOXES, ETC.

PURCHASE
ORDER

54754

TO: *Pellier Laundry Machinery*
731 JACKSON ST,
Kenner, LA 70062

DATE *1-24-22*

Req. by: _____

Req. No.: _____

Bid No.: *2022-2*Charge to
Account No.: _____

Please furnish the following to Craighead County
and be governed by the instructions hereon.

ITEM	QUANTITY	BRAND, CATALOG NO. AND DESCRIPTION	UNIT PRICE	TOTAL
	<i>2</i>	<i>WASHER-EXTRACTOR Milnor</i> <i>Model 36026 V 52</i>	<i>22,950</i>	<i>45,900.00</i>
	<i>3</i>	<i>GAS DRYERS Milnor Model</i> <i>NLG-758 NATURAL GAS</i> <i>HEAT SOURCE</i>	<i>5876.00</i>	<i>17,628.00</i>
<i>Includes FREIGHT, Equipment & INSTALLATION</i>				<i>63,528.00</i>
<i>ALL ACCORDING TO BID SPECS IN</i> <i>BID #59 2022-2</i>				
<i>COUNTY CONTACT</i> <i>MIKE MILLER 870-243-6458</i>				

TOTAL ►

SHIP TO:

Craighead County Detention Center
901 WILSON RD
JONESBORO, AR 72401

DEL. PROMISED:

DEL. REQUIRED:

TERMS:

F.O.B.:

PRICING:

CRAIGHEAD COUNTYBy *[Signature]*

Purchasing Agent

AMZ/SPN

BID TABULATION SHEET				
Washers & Dryers				
Bid 2022-2				
County Detention Facility	Craighead County Detention Facility			
DATE: January 19,2022	901 Willett Road			
	Jonesboro, AR 72401			
BIDDER NAME	ITEM BID	Quantity	Unit Price	Total Price
Pellerin Laundry Machinery Sales Co, Inc	Washing machines	2	\$22,950.00	\$45,900.00
731 Jackson St.	Milnor model 36026 V5Z			
Kenner, LA 70062	Washer-Extractor			
Nick Brasset C(504)487-1005	Includes equipment, freight, Installation			
Nick.Brasset@pellerinlaundry.com				
	Gas Dryers	3	\$5,876.00	\$17,628.00
	Milnor Model MLG-758 Gas Dryer			
	Natural Gas heat source			
	Includes equipment, freight, Installation			
		Total		\$63,528.00
Received one bid only.				
Bid opening witnesses				
Al Haines				
Lisa Lawrence				

AA12
600

CRAIGHEAD COUNTY
INVITATION TO BID-Not an Order
 Craighead County Judge's Office
 511 Union St., Suite 119
 Jonesboro, Arkansas 72401

PURCHASING OFFICE

BID NO. **2022-2**

DATE: January 6, 2022

Sealed bids, subject to the conditions on the reverse hereof, and as may be attached hereto, will be received at this office until 2:00 PM January 19, 2022, local time and then publicly opened, for furnishing the supplies, materials, and/or services as described below.

Bids will be opened January 19, 2022,
 2:00 P.M. Local time

F.O.B. Jonesboro, Arkansas

BY: Al Haines

Maximum Delivery or completion time after issuance of Purchase

PURCHASING DIRECTOR

Order or work ordered by County 60 days

Item #	DESCRIPTION	QUANT	UNIT	UNIT PRICE	AMOUNT
1	Furnish two (2) each commercial grade washer extractor and three (3) commercial grade gas dryers delivered, installed, and trained for use at the Craighead County Detention Center, 801 Willett Road, Jonesboro, AR 72401 according to the attached specifications.	2	Washer	21,278	42,556.00
		3	Dryer	4,870	14,610.00
2	All pages of this bid package should be returned with the bid package to complete the bid.	1	Install	3,957	3,957.00
3	Bid must be signed by authorized company representative.				
4	Bidder should:	1	Freight	2,345	2,345.00
	A. Clearly define and list warranty information on each item in years.				
	B. Include all labor, delivery charges, training, programming, and any other charges FOB Jonesboro, Arkansas 72401, in bid price.				
	C. Include product literature and specifications with bid.				
	D. All relevant information will be considered when determining best bid for Craighead County.				
	E. Specify cash discounts, if available.				
	F. Note bid number on outside of bid envelope.				
	G. Specify approximate ship time in days, if awarded bid.				
	H. Specify nearest service and parts supply location to Jonesboro, AR.				
	I. Quote same or equal equipment in all aspects.				
	J. Specify nearest service and parts supply location to Jonesboro, AR.				
5	Does bidder meet all equipment specifications? Yes <u>X</u> No <u> </u>				
	If no, clearly list and define differences on a separate sheet.				
6	Attached equipment list with names and part numbers is for reference.				
7	Bidder should put total bid price on this sheet. Total bid price is \$ <u>63,528.00</u>				

731 Jackson St., Kenner, LA 70062

EXECUTION OF BID

Date January 17, 22

We, the undersigned, have read all the requirements set forth in this bid proposal including specifications, instructions, conditions, and pertinent information regarding the articles being bid on, and we agree to furnish articles at the prices stated.

Arkansas Use Tax Register No. 00025828-PLS

Bidder Thibault Brisset

Address 731 Jackson St., Kenner, LA 70062

(Person Authorized to Sign Bids) Title Controller, Nicholas Brisset

UNSIGNED BIDS WILL BE REJECTED

BIDS ARE SUBJECT TO REJECTION UNLESS SUBMITTED ON THIS FORM

NOTICE TO BIDDERS, SEE REVERSE SIDE OR ATTACHMENTS FOR INSTRUCTIONS AND CONDITIONS.

AA-12
 601

**CRAIGHEAD COUNTY
JONESBORO, ARKANSAS
CONDITIONS OF BIDDING**

Compliance with the following conditions is necessary for consideration of this bid.

- 1 Signature-This bid must be signed with the firm name and by an authorized officer, employee or agent.
- 2 Sales Tax-Is not to be shown in the bid price, but is to be added by the vendor to the invoice billing to the County.
The County is exempt from Arkansas State Sales Tax on road equipment and vehicles. Contractors are to include all costs into the bid price, including applicable taxes.
- 3 Freight and other delivery charges to destination at designated County facility in the County must be included in bid.
Charges may not be added after the bid is opened.
- 4 Discounts-Show rate, total amount, and latest day any discounts will be allowed after receipt of article and invoice, otherwise County will deduct allowed discount when payment is made.
- 5 Firm Price-All prices quoted will remain firm for at least 30 days from date of bid, unless otherwise specified by the County or bidder.
- 6 Tax Exempt-Craighead County is exempt from State sales tax on self propelled equipment and motor vehicles.
Example: Motor graders, excavators, dozers, dump trucks, pickup trucks, etc.
- 7 Identical Bids-In the event of two or more identical low bids, the contract may be awarded arbitrarily or for any reason to any of such bidders, or split in any proportion between the said two or more bidders at discretion of the County.
- 8 Clean up-Complete cleanup and proper disposal of any and all job related items is considered to be a part of any contract let by Craighead County.
- 9 Ambiguity in bid-Any ambiguity in any bid as the result of omission, error, lack of clarity or non-compliance specifications, instructions, and all conditions of bidding shall be construed in the light most favorable to the County.
- 10 Construction
A. When requested, the Contractor is to supply the County with evidence of having and maintaining proper and specifically Workman's Compensation Insurance in accordance with the laws of the State of Arkansas, Public Liability, and Property Damage. All premiums and cost shall be paid by Contractor. In no way will the County be responsible in case of accident.
B. A Performance Bond equaling the total amount of any bid exceeding \$20,000 must be provided for erection of any public building, public structure, or public improvement (Pursuant to Arkansas Code 18-44-503.)
- 11 The County reserves the right to reject any and all bids, accept in whole or in part, to waive informalities in bids received, to accept bids on materials or equipment with variations from specifications in those cases where efficiency of operation will not be impaired, and unless otherwise specified by bidder, to accept any item in the bid. If unit prices and extensions thereof do not coincide, the County may accept the bid for the lesser amount whether reflected by extension or by the correct multiple of the unit price.

INSTRUCTIONS TO BIDDERS

(Please read carefully)

- 1 Submit bid on bid form attached or reverse side of this sheet.
- 2 Address all bids to: Purchasing Director, Craighead County Judge's Office, 511 Union St., Suite 119, Jonesboro, Arkansas 72401 and make certain to indicate identifying bid number on the outside of bid envelope.
- 3 DO NOT include Federal Excise Tax in bid. County will furnish exemption certificate.
- 4 State Manufacturer, Brand Name, Model, etc. for each item bid on.
- 5 Samples of items, when required must be furnished free, and, if not called for within 30 days from date of bid opening, will be disposed of by the County.
- 6 Bids received after stated time will not be considered.
- 7 Be sure and read all conditions and verify amounts before submitting bids. No changes or additions will be allowed after submission.
- 8 Guarantees and warranties should be attached as a part of the bid, as they may be a consideration in awarding contract. *90 days Labor*
- 9 Delivery or contract completion time is to be shown, as this date may, where time is of the essence, determine the contract award.
- 10 Additional information may be obtained from the Purchasing Department.

**THE COUNTY RESERVES THE RIGHT TO ACCEPT PART OR ALL OF ANY SPECIFIC BID OR BIDS
AND TO ACCEPT BID WITH OR WITHOUT TRADE-IN, AND REJECT ANY AND ALL BIDS.**

*AA12
602*

WASHER SPECIFICATIONS (Two each washers)

NOTE: Make and model are for reference. Bidder should quote equal or better equipment.
Quote should include freight, delivery, installation, training and disposal of old equipment.
Warranty of the equipment should be clearly defined.

- 1 Milnor Model 36026 V5Z Washer-Extractor
- 2 100 Lb. capacity
- 3 15.32 cu. Ft. Cylinder Volume
- 4 Mil-Touch Touchscreen Controller
- 5 Intuitive Troubleshooting
- 6 Unlimited programmable formulas
- 7 10 Pre-programmed formulas for specific industry
- 8 6 flushing chemical liquid soap connections
- 9 Single motor-Inverter drive
- 10 Industrial tapered roller bearings with large contact and spreading force and contributing to long bearing life.
- 11 RinSave Feature-reduces up to .4 gallons/lb. and up to 10 minutes in formula cycle time . Saves labor, water, sewer, gas and electricity. Estimated savings = \$2300 per machine.
- 12 208-240/60/3 Electrical service
- 13 Remove and dispose of existing equipment, install new equipment, secure to floor, connect all utilities, start-up and training.

Dryer Specifications (Three each gas dryers)

NOTE: Make and model are for reference. Bidder should quote equal or better equipment.
Quote should include freight, delivery, installation, training and disposal of old equipment.
Warranty of the equipment should be clearly defined.

- 1 Milnor Model MLG-758 Gas Dryer
- 2 75 Lb. Capacity-Natural gas heat source
- 3 21.5 Cu. Ft. Cylinder volume
- 4 Overall dimensions: 38.25" W x 48" D x 75.12"H
- 5 1000 CFM with 8" exhaust
- 6 175,000 BTU Heat Input
- 7 Phase 7 Microprocessor Control
- 8 Efficient Automatic or Time Controlled Formulas
- 9 Informative Display with trouble shooting
- 10 Smart Lint Monitor to prompt operator for cleaning
- 11 Anti-Wrinkle cooldown
- 12 FSS Interactive Fire Suppression System
- 13 120/60/1 Electrical service
- 14 Remove and dispose of existing equipment, install new equipment, secure to floor, connect all utilities, start-up and training.

AA/2
603

PELLERIN

LAUNDRY MACHINERY SALES COMPANY, INC.

Tuesday, January 4, 2022

Craighead County Detention C
90 Willet RD
Jonesboro, AR 72401
Lieutenant Mike Miller
870-333-5823
mmiller@craigheadso.org



Re. Pellerin Laundry Equipment Solution

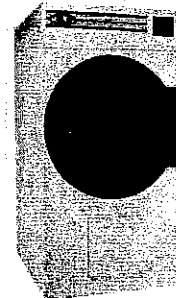
Dear **LT. Mike Miller**

Per your request, please find our laundry equipment proposal for your facility.

Please note: Pricing includes Freight, Delivery and Installation.

DRYER PRICING

QTY.	Description	Unit Price	Ext. Price
3	Milnor Model MLG-758 Gas Dryer <ul style="list-style-type: none">◆ 75 Lb. Capacity – Natural Gas Heat Source◆ 21.5 cu.ft. Cylinder Volume◆ Overall Dimensions: 38.25"W x 48"D x 75.12"H◆ 1,000 CFM with 8" Exhaust◆ 175,000 BTU Heat Input◆ Phase 7 Microprocessor Control◆ Efficient Automatic or Time Controlled Formulas◆ Informative Display with Troubleshooting◆ Smart Lint Monitor to prompt operator for cleaning◆ Anti-Wrinkle Cooldown◆ FSS Interactive Fire Suppression System◆ 120/60/1 Electrical Service Indicate correct voltage here _____	\$4,890.00	\$14,670.00

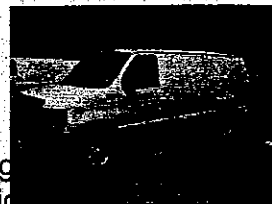


Am12
604

QTY.	Description	Unit Price	Ext. Price
1	INSTALLATION SERVICES	\$1,638.00	\$1,638.00

Pellerin is responsible to:

- ◆ Remove and Dispose of Existing Equipment if needed
- ◆ Receive Equipment at Property
- ◆ Unload, Uncrate & Assemble
- ◆ Move Into Laundry Area; Set in Place
- ◆ Bolt-Level-Grout as Required
- ◆ Make Final Utility Connections within 3' of existing Utilities. These utilities include water, gas, electric, drain, air, steam and sheet metal ductwork.
- ◆ Any Upgrade of Existing Utility Services Not Included
- ◆ Start-up and Training (Pricing includes 1 trip by our service technicians to complete the installation. If additional trips are required due to job site not being ready or other restrictions, additional charges may apply.)



Customer is responsible to:

- ◆ Provide Adequate and Clear Access Into and Through the Laundry Area
- ◆ Provide the Required Utility Services to Code. These utilities include water, gas, electric, drain, air, steam and sheet metal ductwork.
- ◆ Assure the Suitability of the Foundation where the equipment is to be anchored and that the foundation is free and clear of electrical conduit, wiring, structural members, plumbing, etc.
- ◆ Provide an area for the Disposal of Crating-Packing Materials

QTY.	Description	Unit Price	Ext. Price
1	Freight/Delivery to Job Site	\$1,320.00	\$1,320.00

Sub-Total..... \$17,628.00

- **Applicable Taxes are to be added.**

In order to secure equipment pricing and proceed with ordering the equipment, please select options and voltage, sign this quotation and fax it back to my attention at (504) 467-9244. Should you require any additional information, please do not hesitate to contact me at 501-762-2176 or Randyg@pellerinlaundry.com

Sincerely,
PELLERIN LAUNDRY MACHINERY SALES CO., INC.

Randy Gatkowski

Territory Manager

AA-12
6005

PELLERIN

LAUNDRY MACHINERY SALES COMPANY, INC.

Tuesday, January 4, 2022

Craighead County Detention C
90 Willet RD
Jonesboro, AR 72401
Lieutenant Mike Miller
870-333-5823
mmiller@craigheadso.org:



Re. Pellerin Laundry Equipment Solution

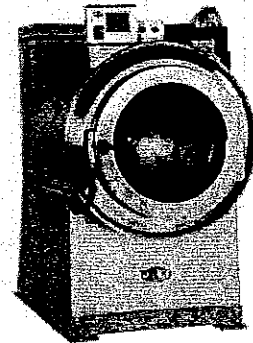
Dear **Mike Miller**

Per your request, please find our laundry equipment proposal for your facility.

Please note: Pricing includes Freight, Delivery and Installation.

WASHER PRICING

QTY.	Description	Unit Price	Ext. Price
2	Milnor Model 36026 V5Z Washer-Extractor <ul style="list-style-type: none">◆ 100 Lb. Capacity◆ 15.32 cu.ft. Cylinder Volume◆ Mil-Touch Touchscreen Controller◆ Intuitive Troubleshooting◆ Unlimited Programmable Formulas◆ 10 Pre-programmed Formulas for specific industry◆ 6 flushing chemical Liquid Soap Connections◆ Single Motor – Inverter Drive◆ Industrial Tapered Roller Bearings with large contact area Spreading force and contributing to long Bearing life◆ RinSave Feature – reduces up to .4 gallons/lb. and up to 10 minutes in formula cycle time.Saves labor, water, sewer, gas and electricityEstimated Annual Savings = \$2,300.00 per machine◆ 208-240/60/3 Electrical ServiceIndicate correct voltage here _____	\$21,278.00	\$42,556.00

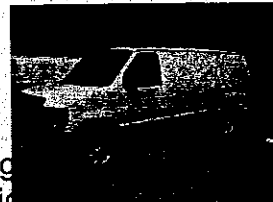


AA12
606

QTY.	Description	Unit Price	Ext. Price
1	INSTALLATION SERVICES	\$2,319.00	\$2,319.00

Pellerin is responsible to:

- ◆ Remove and Dispose of Existing Equipment if needed
- ◆ Receive Equipment at Property
- ◆ Unload, Uncrate & Assemble
- ◆ Move Into Laundry Area; Set in Place
- ◆ Bolt-Level-Grout as Required
- ◆ Make Final Utility Connections within 3' of existing Utilities. These utilities include water, gas, electric, drain, air, steam and sheet metal ductwork.
- ◆ Any Upgrade of Existing Utility Services Not Included
- ◆ Start-up and Training (Pricing includes 1 trip by our service technicians to complete the installation. If additional trips are required due to job site not being ready or other restrictions, additional charges may apply.)



Customer is responsible to:

- ◆ Provide Adequate and Clear Access Into and Through the Laundry Area
- ◆ Provide the Required Utility Services to Code. These utilities include water, gas, electric, drain, air, steam and sheet metal ductwork.
- ◆ Assure the Suitability of the Foundation where the equipment is to be anchored and that the foundation is free and clear of electrical conduit, wiring, structural members, plumbing, etc.
- ◆ Provide an area for the Disposal of Crating-Packing Materials

QTY.	Description	Unit Price	Ext. Price
1	Freight/Delivery to Job Site	\$1,025.00	\$1,025.00

Sub-Total..... \$45,900.00

Applicable Taxes are to be added.

In order to secure equipment pricing and proceed with ordering the equipment, please select options and voltage, sign this quotation and fax it back to my attention at (504) 467-9244 or send to Sales@pellerinlaundry.com Should you require any additional information, please do not hesitate to contact me at 501-762-2176 or at Randyg@pellerinlaundry.com

Sincerely,
PELLERIN LAUNDRY MACHINERY SALES CO., INC.

Randy Gatlowski

Territory Manager

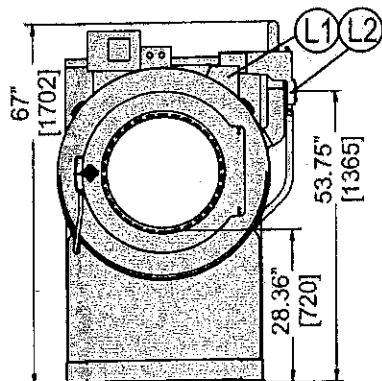
AA 12/607

36026 V5Z

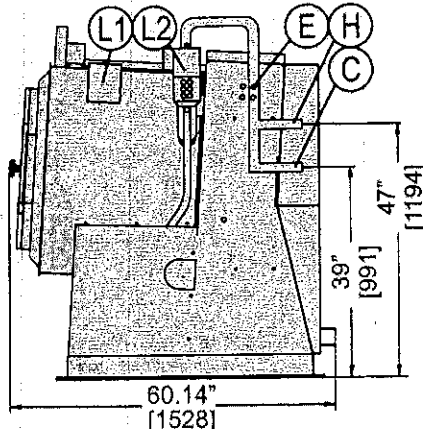
100 LB. (45KG) CAPACITY
RIGID-MOUNT WASHER-EXTRACTOR

SPECIFICATION SHEET

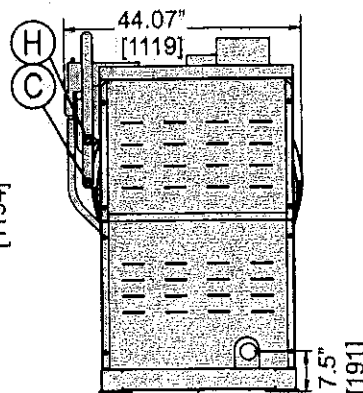
FRONT VIEW



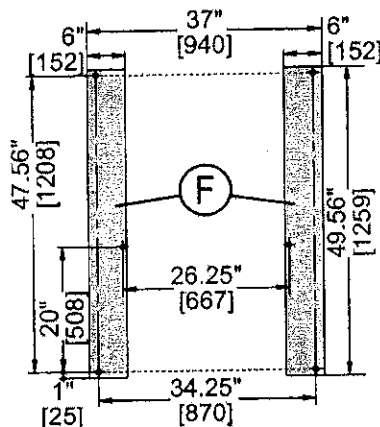
RIGHT SIDE VIEW



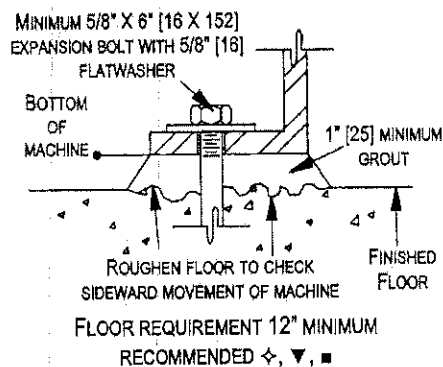
REAR VIEW



FOUNDATION VIEW



ANCHORING DETAIL



LEGEND

C	Cold water Inlet, .75" (19 mm) NPT
D	Drain to rear, 3" (76 mm) pipe socket joint
E	Main electrical connection
F	Foundation pads. Anchor bolt holes .8125" (21 mm) diameter
H	Hot water Inlet, .75" (19 mm) NPT
L1	Standard soap chute
L2	Liquid supply inlets

MECHANICAL SPECIFICATIONS

Capacity - lb. (kg)	100 (45)
Cylinder Diameter x Depth - in. (mm)	36 x 26 (914 x 660)
Door Opening - in. (mm)	21.69 (551)
Cylinder Volume - cu. ft. (L)	15.3 (434)
Machine Dimensions (W x D x H) - in. (mm)	44.07 x 60.14 x 67 (1119 x 1528 x 1702)
Shipping Dimensions (W x D x H) - in. (mm)	75 x 60 x 73.5 (1905 x 1524 x 1867)
Motor - HP (kW)	5 (3.72)
Wash Speeds - RPM	25-45
Distribution Speed - RPM	65
Extraction Speeds - RPM	200-541
Extraction G-Force	150
Static Weight - lb. (kg) ♦	2171 (985)
Max. Dynamic Load RMS- lb. (kg) ♦	2643 (1199)
Frequency (Hz)	9.02
Water Pressure (Working) - psi (bar)	10-75 (.68-5.1)
Water Valve Cv Rating at 72°F (22°C)	6.5 (25)
Minimum Recommended Distance Between Machines - in. (mm)	12 (305)

ELECTRICAL SPECIFICATIONS

Voltage	Running Amps	Fuse (Amps)	Circuit Breaker (Amps)
208/240/3/60	10/9	FRN20	20
220/3/50	9	FRN20	20
380/3/50-60	5.7	FRS15	15
415/3/50	4.5	FRS15	15
480/3/60	4.5	FRS15	15

See Fuse and Wire Size manual MAEFUSE 1BE for safety information. Contact factory for electrical specifications if equipped with Electric Heat option. Contact factory for single phase availability.

▼ See dimensional drawing for complete details.

♦ The floor and/or other support components must have sufficient strength (and rigidity with due consideration for natural or resonant frequency thereof) to withstand the fully loaded weight of the machine including the goods, the water, and any repeated sinusoidal (rotating) forces generated during its operation. Contact the factory for additional machine data for use by a competent soil and/or structural engineer.

■ Machine bases made from concrete should either be part of a monolithic pour or should be tied into foundation and not isolated from existing floor.



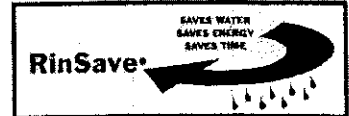
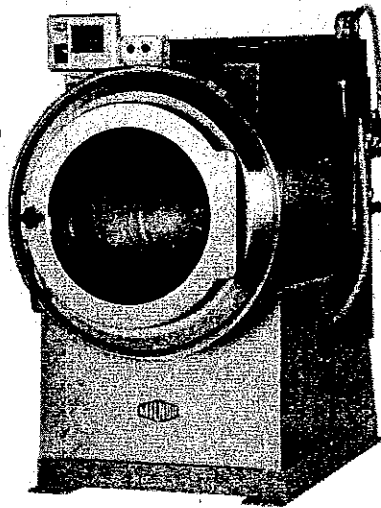
36026 V5Z

100 LB. (45KG) CAPACITY
RIGID-MOUNT WASHER-EXTRACTOR

SPECIFICATION SHEET

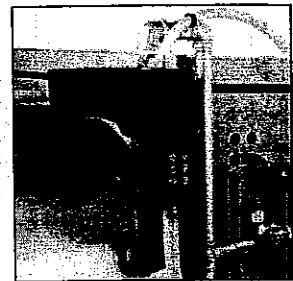
Standard Features:

- RinSave® water saving technology
- 7 speeds (2 wash, 1 distribution, 1 RinSave, 3 extract)
- MilTouch™ programmable control
- Single-motor inverter drive
- Tall, lifting ribs
- Tapered roller bearings
- High M.A.F. (Mechanical Action Factor)
- Large cylinder perforations
- Fresh-water flushing chemical manifold
- Auto tension V-belt drive
- Six (6) liquid chemical injection ports
- Control reads in English/second language
- 5-year limited warranty on frame, cylinder & shell

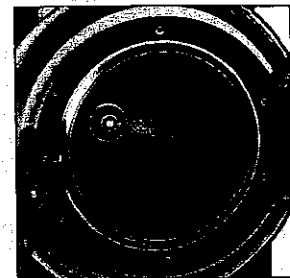


Optional Features:

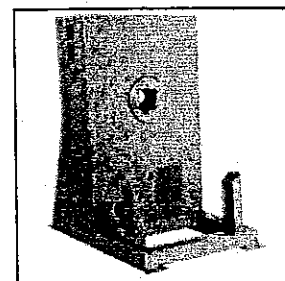
- Steam
- Electric Heat
- 5 compartment flushing supply injector
- Prison package



Safe chemical injection



Superior cylinder design



Solid industrial frame

Why Purchase Milnor?

- RinSave® water saver, in conjunction with large cylinder perforations, provides more efficient rinsing. **BENEFIT: Saves water, energy, and time.**
- Larger cylinder volume than most competitive similar sized washer-extractors provides *greater productivity*. More linen washed per day, or fewer hours required to process. **BENEFIT: Saves labor.**
- Faster process times reduce fabric wear, promoting *longer linen life!* **BENEFIT: Saves linen replacement costs.**
- Tall perforated ribs provide excellent lifting. **BENEFIT: Greater mechanical action leads to better wash quality.**
- 150-G high extract provides excellent moisture removal. Lower extract speeds are available for uniforms, delicate textiles and blended fabrics. **BENEFIT: Better extraction saves dryer fuel.**
- MilTouch™ touch screen control, utilizing resistive touch screen technology and full VGA resolution, has a clear and informative display which shows current machine status info including total formula time and time elapsed. Formulas can be developed on a PC, saved to USB external memory and uploaded with a screen touch. Controller also provides intuitive fault diagnosis and relevant troubleshooting suggestions. **BENEFIT: Fewer operator errors.**
- Superior product support through local, highly-skilled dealers. **BENEFIT: Faster repairs mean less downtime.**

Contact Milnor for your local, authorized dealer:

Pellerin Milnor Corporation
P.O. Box 400 • Kenner, LA 70063
t: 504-467-9591 • f: 504-468-3094



M758V

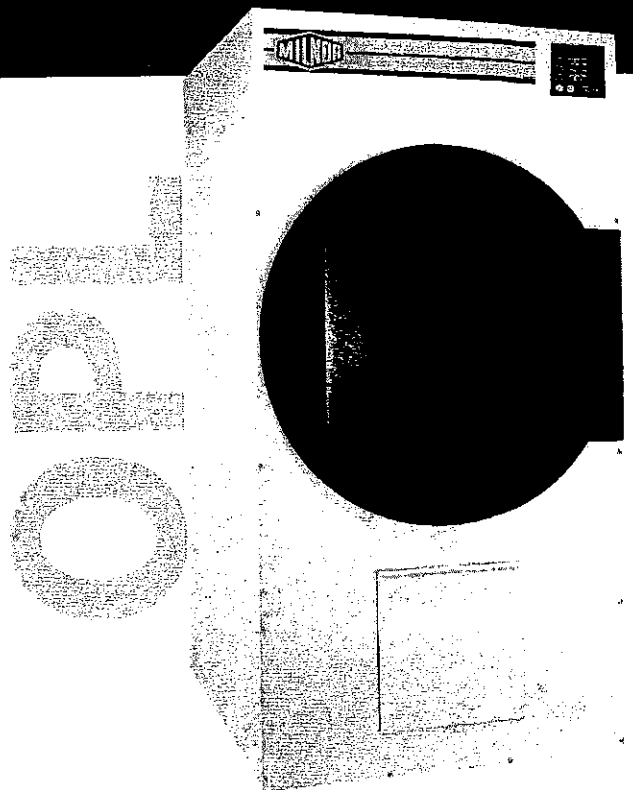
75-lb Capacity OPL Dryer

Standard Features:

- 75-lb. capacity
- 21.50 cu. ft basket volume
- 175,000 Btu/hr heat input, 1,000 cfm airflow
- Radial airflow
- Steel door with gasketless glass
- 8" diameter vent connection
- Easy to clean lint drawer
- Available in gas, steam and electric heat

Optional Features:

- Stainless steel front, cabinet & basket
- Reversing basket
- F.S.S. (Fire Suppression System)



M758V OPL Dryer

Engineer Driven Design That is Built to Last

Our dryers showcase an engineer-driven approach to design. Bearings are permanently lubricated on the motor and drive system. There are no chains used; rather, we use V-belts and pulleys for smooth, quiet, and trouble free operation. Our dryer cabinets are electrostatically powder-painted inside and out then baked at 420-degrees fahrenheit before final assembly - ensuring the hardest surface and the longest lasting finish in the industry.

Rugged Steel Door with Gasketless Door Glass

Our dryer doors are one solid piece of steel with gasketless glass. This eliminates the issue of glass falling out due to wear and tear on rubber gaskets that some manufacturers use to secure their glass. The security and durability that gasketless glass provides is essential to longevity.

Easy-to-Read, Multilingual Controls

Our dryers were one of the first computer operated dryers on the market and we continue to apply innovative technology to dryer operation. Our accessible design, easy-to-read LED screens and our user friendly multilingual interface positions Milnor as a leader in the laundry industry.

Your local Milnor independent authorized distributor

AA12/
610

www.milnor.com



M758V

ML-758V Specifications

GAS MODEL	Maximum Capacity (dry weight)	75 lb	34.02 kg
	Tumbler Diameter	36-1/4"	92.08 cm
	Tumbler Depth	36"	91.44 cm
	Tumbler Volume	21.50 cu ft	608.81 L
	Tumbler / Drive Motor	Non-Reversing / Reversing	1 hp / 1/2 hp*
	Blower / Fan Motor*	Non-Reversing / Reversing	1/4 hp*
	Door Opening (diameter)	31-3/8"	79.69 cm
	Door Sill Height	28"	71.12 cm
	Water Connection	3/4"-11.5 NH (North America)	3/4" B.S.P.T. (Outside North America)
	Dryers per 20'/40' Container	9 / 20	
ELECTRIC MODEL	Dryers per 48'/53' Container	24 / 26	
	Voltage Available	120-575V 1, 3, 3, 4w	50/60 Hz
	Approximate Net Weight	721 lb	327.04 kg
	Approximate Shipping Weight	773 lb	350.63 kg
	Airflow	60 Hz 50 Hz	1,000 cfm 833 cfm
	Heat Input		175,000 Btu/hr 44,099 kcal/hr
	Exhaust Connection (diameter)	8"	20.32 cm
	Compressed Air Connection	N/A	
	Compressed Air Volume	N/A	
	Inlet Pipe Connection	3/4" F.N.P.T.	
STEAM MODEL**	Voltage Available	208-575V 3, 3, 4w	50/60 Hz
	Approximate Net Weight	721 lb	327.04 kg
	Approximate Shipping Weight	773 lb	350.63 kg
	Airflow	60 Hz 50 Hz	1,000 cfm 833 cfm
	Heat Input		175,000 Btu/hr 44,099 kcal/hr
	Exhaust Connection (diameter)	8"	20.32 cm
	Compressed Air Connection	N/A	
	Compressed Air Volume	N/A	
	Oven Size		
		kW	Btu/hr
STEAM MODEL**		30	102,400
	Voltage Available	120-575V 1, 3, 3, 4w	50/60 Hz
	Approximate Net Weight	816 lb	370.13 kg
	Approximate Shipping Weight	868 lb	393.72 kg
	Airflow	60 Hz 50 Hz	1,200 cfm 1,000 cfm
	Heat Input		33.98 cfm 28.32 cfm
	Steam Consumption (Max)		275 lb/hr 124.7 kg/hr
	Operating Steam Pressure		125 psi max 8.62 bar
	Exhaust Connection (diameter)	8"	20.32 cm
	Compressed Air Connection	1/8" F.N.P.T.	
STEAM MODEL**	Compressed Air Volume	0.75 cfm	0.02 cmh
	Boiler Horsepower (Normal Load)		7.2 Bhp
	Supply Connection	(1) 1" N.P.T. (female)	
STEAM MODEL**	Return Connection	(1) 1" N.P.T. (female)	

* Reversing dryers use 3-phase (3ø) motors.

** Air-operated steam damper system requires a clean, dry, and regulated 80 psi +/- 10 psi (5.51 bar +/- 0.69 bar) air supply.

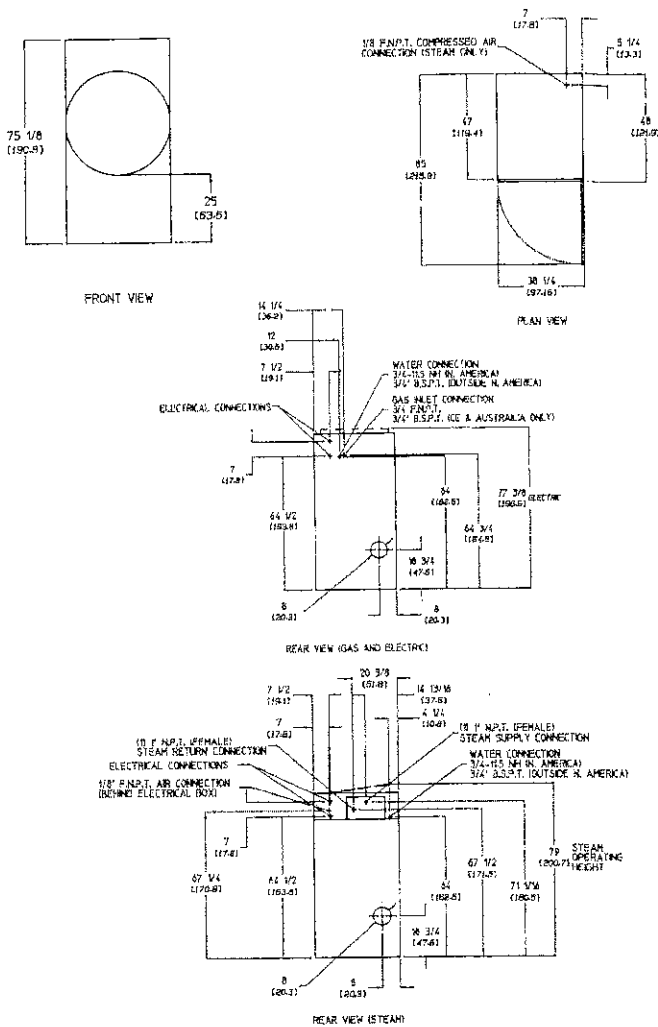
REV 04/04/15

DRYER NOTES:

- * DUCTWORK SIZE VARIES WITH INSTALLATION CONDITIONS.
- * EXHAUST STATIC PRESSURE MUST BE NO LESS THAN 0 AND MUST NOT EXCEED 0.2" (1.74 MM) WATER COLUMN.

STEAM DRYER NOTES:

- * OPERATING HEIGHT OF STEAM DRYER IS 7' (2.06 M).
- * SIZE OF HP/HP (1) DRYER VARIES WITH INSTALLATION CONDITIONS. CONTACT FACTORY FOR ASSISTANCE.
- * AIR OPERATED STEAM DAMPER SYSTEM REQUIRES CLEAN, DRY, REGULATED 80 PSI +/- 10 PSI (5.5 BAR +/- 0.69 BAR) AIR SUPPLY.



Electrical Service Specifications					
SERVICE VOLTAGE	PHASE	WIRE SERVICE	APPROX AMP DRAW	APPROX AMP DRAW	CIRCUIT BREAKER
			60 Hz	50 Hz	
GAS & STEAM					
120	1ø	2	13.0	—	20
208	1ø	2	7.6	—	15
220	1ø	2	7.3	6.6	15
230	1ø	2	—	8.0	15
240	1ø	2	7.0	8.0	15
GAS & STEAM					
208	3ø	3	4.7	—	15
220	3ø	3	4.8	4.8	15
230	3ø	3	—	4.7	15
240	3ø	3	4.9	5.4	15
380	3ø	4*	2.9	3.1	15
400	3ø	4*	—	3.2	15
416	3ø	4*	—	3.1	15
440	3ø	4*	2.6	—	15
460	3ø	3	2.8	—	15
480	3ø	3	2.8	—	15

Electrical Service Specifications					
SERVICE VOLTAGE	PHASE	WIRE SERVICE	APPROX AMP DRAW	APPROX AMP DRAW	CIRCUIT BREAKER
			60 Hz	50 Hz	
30 kW (Nominal) Electric					
Single Phase Heat Single Phase Motor					
208	1ø	2	152	—	200
220	1ø	2	125	127	175
230	1ø	2	123	130	175
240	1ø	2	132	133	175
Three Phase Heat Three Phase Motor					
208	3ø	3	91	—	125
220	3ø	3	86	77	125
230	3ø	3	71	78	100
240	3ø	3	79	80	100
380	3ø	4*	—	48	70
400	3ø	4*	—	48	70
416	3ø	4*	49	50	70
Three Phase Heat Three Phase Motor					
208	3ø	3	88	—	125
220	3ø	3	73	73	100
230	3ø	3	—	75	100
240	3ø	3	77	78	100
380	3ø	4/3	42	49	70
400	3ø	4/3	—	44	60
416	3ø	4/3	—	45	60
440	3ø	3	37	—	50
460	3ø	3	38	—	50
480	3ø	3	39	—	50

Electrical Service Specifications					
SERVICE VOLTAGE	PHASE	WIRE SERVICE	APPROX AMP DRAW	APPROX AMP DRAW	CIRCUIT BREAKER
			60 Hz	50 Hz	
24 kW (Nominal) Electric					
Single Phase Heat Single Phase Motor					
208	1ø	2	123	—	150
220	1ø	2	98	100	125
230	1ø	2	97	104	150
240	1ø	2	107	108	150
Three Phase Heat Three Phase Motor					
208	3ø	3	74	—	100
220	3ø	3	60	61	80
230	3ø	3	56	63	80
240	3ø	3	65	66	90
380	3ø	4*	—	39	50
400	3ø	4*	—	40	50
416	3ø	4*	—	41	60
Three Phase Heat Three Phase Motor					
208	3ø	3	71	—	90
220	3ø	3	57	57	80
230	3ø	3	—	60	80
240	3ø	3	63	63	80
380	3ø	4/3	33	33	50
400	3ø	4/3	—	35	50
416	3ø	4/3	—	36	50
440	3ø	3	29	—	40
460	3ø	3	30	—	40
480	3ø	3	32	—	40

Pellerin Milnor Corporation, P.O. Box 400, Kenner, LA 70063 USA,
Phone 504.712.7656 Toll Free: 800.469.8780 Fax: 504.468.3094

www.milnor.com





Pellerin Milnor Corporation

5/3 Limited Warranty Plan

Pellerin Milnor Corporation extends the following warranty to the original purchaser of a Milnor washer-extractor or coin-operated washer-extractor, up to 170 pounds rated capacity. We warrant that these models will be free from manufacturer's defects in materials and workmanship for the periods set forth below, beginning from the date of shipment from the Milnor factory.

A Five Year Limited Warranty applies to:

- Basket
- Frame
- Shell
- Bearings and bearing housing seals
- Door and electric door interlock

A Three Year Limited Warranty applies to:

- Motors
- Thermometer (if applicable)
- Transformer
- Inverter
- Water valves
- Drain valve
- Electronic boards and control components
- Accessories (lamps, terminal blocks, plug and wire connectors, fuse holders, switches)

A 90-Day Limited Warranty applies to parts which require routine replacement due to normal wear, including but not limited to belts, rubber gaskets and hoses.

AA12
6/12



Pellerin Milnor Corporation

5/3 Limited Warranty Plan

Exclusions

- The three-year warranty listed above does not apply to machines installed in uniform plants, linen plants, mat plants, hospital co-op laundries, textile manufacturing and other large commercial laundries. The warranty term for those facilities is in effect for a one-year period for those facilities. (Drycleaning/shirt laundry plants are covered by the three-year warranty.)
- Service by unauthorized persons voids the warranty. We are not responsible, or in any way liable, for unauthorized repairs or service to our machines and/or the components thereof.
- This Warranty is void if the machine is not installed (including, but not limited to properly anchoring and bolting the machine), operated, and maintained as specified in the Operating and Maintenance Manual supplied with the machine, or if the machine is not operated under normal conditions, not used for normal washing purposes, or is tampered with, modified, or abused, or used for purposes not intended in the design and construction of the machine.
- The warranty does not include coverage of any part that has been affected in any way by aggressive water or chemical attack.

It is strongly recommended that you read the user's manuals before attempting to install, service or operate your machine. We suggest that this manual be kept near the machinery so that it will not become lost, and can be used for future reference.

Effective date August 7, 2006

APR 12
6/13

AMERICAN DRYER CORPORATION

"i" SERIES DRYER WARRANTY

Domestic (U.S. & Canada)

IMPORTANT: READ THIS WARRANTY CAREFULLY

The American Dryer Corporation warrants all new equipment (and the original parts thereof manufactured by ADC) to be free from defects in material or workmanship for a period of 5 years from the date of sale, but in no event more than 5-1/2 years from the date of manufacture thereof, except as hereinafter provided.

All ADC equipment and parts are to be purchased solely for commercial or industrial use.

This warranty extends only to the original purchaser of ADC products and to those persons who, under applicable state law, are entitled to rely hereon as third party beneficiaries, but in no event shall ADC be liable for property damage sustained by such a third party beneficiary if said applicable state law contemplates such liability but permits its exclusion.

With respect to all new repair or replacement parts for equipment manufactured by ADC for which the 5 year warranty period has expired or for all new repair or replacement parts for equipment not manufactured by ADC, the warranty period is limited to 90 days from the date of sale. The warranty period on each new replacement part furnished by ADC in fulfillment of the warranty on all new replacement parts shall be for the unexpired portion of the original warranty period on the part replaced.

With respect to lint screens, belts, gaskets, fuses, and other accessories furnished with the new equipment but not manufactured by ADC, the warranty is limited to 1 year.

ADC's total liability arising out of the manufacture and sale of new equipment and parts, whether under the warranty or caused by ADC's negligence or otherwise, shall be limited to ADC repairing or replacing, at its option, any defective equipment or part returned f.o.b. ADC's factory, transportation prepaid, within the applicable warranty period and found by ADC to have been defective. The liability of ADC does not include furnishing or paying for any labor such as that required to service, remove, or install; to diagnose troubles; to adjust, remove, or replace defective equipment or a part; nor does it include any responsibility for transportation or insurance or other related expense which is involved therein.

With respect to dryers manufactured with a steam coil, said steam coil warranty is subject to a prorated use charge from date of dryer purchase or date of manufacture, whichever is applicable. The dryer owner making a warranty claim for a steam coil may elect to purchase a new steam coil under ADC's "No Return Program" at a reduced price or return the claimed coil (after receiving written authorization from ADC) at the dryer owner's expense for evaluation and warranty verification by ADC and the steam coil manufacturer. Steam coils are subject to all provisions of the Dryer Warranty.

Under the "No Return Program," the price to the dryer owner will be:

1 - 6 months	Net price less 80% + shipping charges
7 - 12 months	Net price less 75% + shipping charges
13 - 24 months	Net price less 70% + shipping charges
25 - 30 months	Net price less 63% + shipping charges

If a steam coil is returned for evaluation and found to have failed due to material or workmanship, the price of a replacement steam coil will be:

1 - 12 months	No charge (dryer owner is responsible for shipping charges)
13 - 24 months	Net price less 85% + shipping charges
25 - 30 months	Net price less 78% + shipping charges

If a steam coil is returned for evaluation and found to have failed due to reasons other than manufacturers' defect in material or workmanship (operated under pressures, plumbing, or conditions other than those specified by ADC as outlined below), the dryer owner is not eligible for steam coil pricing under the "No Return Program."

The warranty of ADC is conditioned upon installation and use of its equipment under normal operating conditions. The warranty is void on equipment or parts that have been subjected to misuse, accident, or negligent damage; operated under loads, pressures, speeds, electrical connections, plumbing, or conditions other than those specified by ADC; operated or repaired with other than genuine ADC replacement parts; damaged by fire, flood, vandalism, or such other causes beyond the control of ADC; altered, or repaired in any way that affects the reliability or detracts from its performance; which have had the identification plate or serial number altered, effaced, or removed; or which have been located in the proximity of dry cleaning machines and/or perchloroethylene.

No defective equipment or part may be returned to ADC for repair or replacement without prior written authorization from ADC. Charges for unauthorized repairs will not be accepted or paid by ADC.

This warranty may only be amended, waived, or extended by written document signed by an authorized officer of ADC. The waiver by ADC of any individual limitation of this warranty shall not operate as a waiver of any other limitation of this warranty or of any future right, power, or privilege of ADC.

ADC is not responsible for any injury, property damage, or other consequential or incidental damages arising directly or indirectly from the purchase or use of its products or from any defect in material or workmanship.

ADC makes no other express or implied warranty, statutory or otherwise, concerning the equipment, parts, or service, including, without limitation, a warranty of fitness for a particular purpose, a warranty of merchantability, or any other implied warranties which may arise from course of dealing or usage of trade. The warranties given here are expressly in lieu of all other warranties, express or implied. ADC neither assumes, nor authorizes any person to assume for it, any other warranty or liability in connection with the manufacture, use, or sale of its equipment or parts.



For warranty service, contact the reseller from whom the ADC equipment or part was purchased.
If the reseller cannot be reached, contact ADC at 88 Currant Road, Fall River, MA 02720-4781, attention Service Department.

ADC Part No. 113544
052815Bvillella/tcosta

AA12
1014

PELLERIN

LAUNDRY MACHINERY SALES COMPANY, INC.

FREQUENTLY ASKED WARRANTY QUESTIONS

For specific warranty questions contact our service department (504) 467-9593 Ext. 2 or parts@pellerinlaundry.com.

Why do I receive an invoice for a part that is under warranty?

An invoice is generated every time a part leaves our warehouse. You will only need to pay this invoice if warranty credit is denied by the manufacturer.

When do I return a warranty part to Pellerin?

Some warranty parts may not need to be returned to receive credit. Contact Stacy Bruser for specific questions; never dispose of any part until you have received credit.

Who pays the shipping charges?

Shipping charges are not covered by the manufacturer's standard parts warranty. Air freight and truck shipping will not be credited. Additionally, no parts sent back freight collect will be accepted.

What information should I include with any returned part?

A copy of the invoice with the model and serial number of the machine and a brief description of the reason for the return.

How long will it take to receive credit?

The length of time it will take to receive credit will vary from manufacturer to manufacturer and part to part. Most parts will clear your account in two to four weeks, but some parts may take longer.

Return Warranty Parts to:
Pellerin Laundry Machinery
731 Jackson Street
Kenner, LA 70062
Attn. Warranty
parts@pellerinlaundry.com

10/12/15

NOTICE TO BIDDERS Craighead Co

~~DO NOT WRITE IN THESE SPACES~~

RECEIVED
JAN 1 4 2022
FROM FROM
CRAIGHEAD COUNTY
JUDGE'S OFFICE

NOTICE TO BIDDERS

Craighead County is now accepting bids until 2:00 PM, January 19, 2022, local time, at the Craighead County Judge's office for the following:

Commercial washers and dryers for the Craighead County Detention Facility.

Bids may be picked up at the County Judge's office, Craighead County Courthouse Annex, 511 Union St., Suite 119, Jonesboro, Arkansas, Monday through Friday, from 8:00 A.M. until 5:00 P.M.

Bids will be opened at 2:00 PM, January 19, 2022, local time, in the County Judge's office.

The County reserves the right to reject any or all bids or any part of any specific bid.

Bid specifications are available on the Craghead County Web Site at www.cragheadcounty.org

Al Haines
Purchasing Agent
Craighead County

Matthew Smith, being duly sworn, says:

That he is Classified Director of the Jonesboro Sun, a daily newspaper of general circulation, printed and published in Jonesboro, Craighead County, AR; that the publication, a copy of which is attached hereto, was published in the said newspaper on the following dates:

January 07, 2022

Publisher's Fee: \$ 77.35

That said newspaper was regularly issued and circulated on those dates.

SIGNED:

Subscribed to and sworn to me this 7th day of January
2022.

Janet Melton, Notary Public 9/6/2022

00013656 70261989

CRAIGHEAD COUNTY JUDGES OFFICE
511 UNION STE 119
JONESBORO, AR 72401

OFFICIAL SEAL
JANET MELTON
COMMISSION # 12389619
NOTARY PUBLIC-ARKANSAS
GRAPEHEAD COUNTY
MY COMMISSION EXPIRES: 09-06-22

7/12/64