

FILED
OCT 15 2013
KADE HOLLIDAY
COUNTY & PROBATE COURT CLERK

Quorum Court Minutes

10/14/2013

Resolution No. 2013-9: **APPROVED**

October 14, 2013 Quorum Court Meeting

12 Justices of the Peace present.

Judge **Ed Hill** called the meeting to order.

Justice **Fred Bowers** relayed the details for a bid for steel to be used on bridges for the county. The bid may be reviewed in the Judge's Office.

A Resolution declaring the resignation of District #7 Justice **Kevin Hoke** was read --*Appendix 1*. Justice **Barbara Weinstock** moved to pass the resolution. Justice **Terri Couch** seconded.

Judge **Hill** said he would submit names to Governor Mike Beebe for the selection of the next District #7 Justice of the Peace. He would wait a few days before submitting names to allow any who may interested to step forward. Justice **Ken Stacks** inquired about the boundaries of District #7. Justice **Stacks** and Justice **Couch** requested that maps for each district should be placed on the Craighead County website. Judge **Hill** agreed to the request.

Judge **Hill** updated the Court on the Bono Lake Project. Final inspections are being done. Bono Lake should be ready to fill in the next month.

Justice **Stacks** and Justice **Weinstock** commented on the clean audit that the county received. Judge **Hill** encouraged the Court to read through the audit thoroughly.

Justice **Max Render** inquired about the regular meetings with the elected officials. Judge **Hill** stated the meetings were held once a month.

Justice **Jim Bryant** moved to adjourn the meeting. The Motion was seconded by Justice **Mike Hawkins**.

Also distributed to the Court was the Monthly Road Department Report – *Appendix 2*, the Monthly Sheriff's Report – *Appendix 3*, and an update of the County's Cash Receipts – *Appendix 4*.

**AGENDA
CRAIGHEAD COUNTY QUORUM COURT
COMMITTEE MEETING
OCTOBER 14, 2013
7:00 P.M.**

Assembly and Prayer

Roll Call

- 1. Bid Opening regarding bids on steel for bridges in the county.**
- 2. Resolution declaring the resignation of District #7 Justice of the Peace, Kevin Hoke.**
- 3. Judge Hill will brief the court members on any current business.**

Public Service Committee:

- A. Presentation by rep. from (Add "Your HR")**
- B. Resolution reappointing two members to the Equalization Board of Directors.**
- C. Resolution to appoint a board member to the Library Board of Directors to fill a vacancy.**
- D. Resolution to reappoint a board member to the Craighead County Nursing Center to an additional term.**

Finance and Administration Committee:

- A. Review of financial reports and discussion of any current financial matters.**

Roads and Transportation Committee Meeting:

- a. County Road Superintendent Eugene Neff will update the committee concerning roads and bridges in the county.**

STATE OF ARKANSAS
COUNTY OF CRAIGHEAD
QUORUM COURT

FILED

OCT 15 2013

KADE HOLLIDAY
COUNTY & PROBATE COURT CLERK

RESOLUTION NUMBER 2013-9

A RESOLUTION DECLARING A VACANCY IN THE OFFICE OF JUSTICE OF THE PEACE, STATE OF ARKANSAS.

WHEREAS, Kevin Hoke, who held the office of Justice of the Peace for District 7 of Craighead County, State of Arkansas, until his resignation on September 24, 2013; and

WHEREAS, it is the obligation of the Quorum Court of the County of Craighead County, State of Arkansas, to declare that a vacancy has occurred in the office of Justice of the Peace in the County of Craighead, State of Arkansas, as authorized by Amendment 55 of the Constitution of the State of Arkansas and Arkansas Code Annotated § 14-14-1309.


NOW, THEREFORE BE IT RESOLVED BY THE QUORUM COURT OF THE COUNTY OF CRAIGHEAD, STATE OF ARKANSAS THAT A VACANCY IS DECLARED TO EXIST IN THE OFFICE OF JUSTICE OF THE PEACE.

BE IT FURTHER RESOLVED BY THE QUORUM COURT OF THE COUNTY OF CRAIGHEAD, STATE OF ARKANSAS THAT THE QUORUM COURT OF THE COUNTY OF CRAIGHEAD, STATE OF ARKANSAS WILL MEET AT 7:00 PM IN ROOM 119 OF THE CRAIGHEAD COUNTY COURTHOUSE ANNEX ON OCTOBER 14, 2013 FOR THE PURPOSE OF DECLARING THE VACANCY IN THE OFFICE OF JUSTICE OF THE PEACE FOR DISTRICT 7.


FURTHERMORE, BE IT RESOLVED BY THE QUORUM COURT OF THE COUNTY OF CRAIGHEAD, STATE OF ARKANSAS THAT THIS RESOLUTION SHALL BECOME EFFECTIVE IMMEDIATELY UPON ITS PASSAGE AND APPROVAL.

Dated this 14th day of October, 2013.

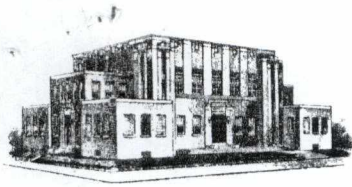
ATTEST:


Kade Holliday
County Clerk

APPROVED:


Ed Hill
County Judge

Appendix 1



Craighead County Highway Department

2800 Moore Road
Jonesboro, AR 72401
870-933-4510



Road Report September 2013

During the month of September a total number 4,001 yards of gravel was hauled from McAfee pit and a total number 5,079 yards of gravel was hauled from Spurlock pit and a total number 518.98 tons of chat was hauled to the following locations:

East

635 972 912 549 586 560 931 915 691 636 626 696

A total number 2,740 yards of gravel was hauled and some of the gravel was hauled out of the stockpile

West

281 143 217 233 760 218 281 460 364 768 380 167

A total number 5,994.00 of gravel was hauled and some of the gravel was hauled out of stockpile

Road Work

- 4 set up work CR 307
- 5 set up work on CR 701 for the City of Jonesboro
- 17 set up work on CR 476
- 18 CR 460, digging ditches, installing driveway tiles, and hauled dirt off to Culberhouse
- 19 road work on CR 460
- 23 road work on CR 460
- 24 **Atlas paved CR 476**
 Road work on CR 460
 Road work on CR 460

NEA District Fair Grounds

- 4 hauled 2 loads $\frac{3}{4}$ minus
- 5 hauled 1 load $\frac{3}{4}$ minus

City of Jonesboro

17 Atlas Asphalt Stadium for the city

Nettleton School

25 8 loads dirt hauled from Black Oak Levee

Valley View School

25 2 loads dirt hauled from Black Oak levee

Westside School

25 3 loads dirt hauled from Black Oak levee

26 1 load dirt hauled from Black Oak

Lake City School

25 3 loads dirt hauled from Black Oak levee

Black Oak City Hall

25 1 load dirt hauled from Black Oak levee

City of Monette

25 hauled 1 load $\frac{1}{4}$ minus from Bradley

Bono Lake

- 3 placing rip at the lake, 13 loads and 247.75 tons of rip was hauled from Bradley at Cord
- 4 placing rip at the lake, 7 loads and 131.42 tons of rip was hauled from Bradley at Cord
- 5 rolling, moving rip and re-measure elevation for stakes
- 9 slopping bank, moving stumps
- 10 slopping banks, moving stumps
- 16 spread seed on the back side of levee area
- 18 spreading seed on the back side of levee area
- 19 closed off valve to drain so the lake could start filling up with water

City of Brookland

4 hauled 2 loads of chat to city shop

City of Bono

- 12 hauled 2 loads of rip rap to city stockpile

Keller's Chapel

- 10 hauled sand from fairgrounds to the graveyard

ASU farmers Market

- 16 hauled 3 loads of chat

Valley View School New County Road # 4191

- 3 Hauled 1 load of chat from shop, building **new road** connecting to CR 425
Put in concrete tiles, ditch work
- 10 hauled gravel and spread (GC)
- 11 worked on road
- 12 installed 60" tile, put up signs (4) Stop signs (1) Stop ahead speed limit sign

Philadelphia Fire Dept

- 4 cut down parking lot for road work on 307

Craighead County Nursing Home

- 17 installed a flag pole

Signs

- 30 15 MPH put up at Valley View School

Tiles (All driveway tiles are on the county right of way)

- 4 installed driveway tile on CR 635
- 5 installed driveway tile on CR 912 a 24 x 36
Installed driveway tile on CR 927 a 24 x 40
- 9 installed driveway tile on CR 912
Installed driveway tile on CR 243
- 17 installed driveway tile on CR 476
- 11 & 12 installed 11 6 foot sections of pipe on concrete tile on CR 760, under road
- 19 installed a county tile on CR 673 24x45
- 23 installed 4 driveway tiles on CR 460(Hoss)
- 24 installed 4 driveway tiles on CR 460(Hoss)
Fixed 2 driveway tiles on CR 476
- 25 installed driveway tile on CR 768 a 20x 30
- 30 installed a driveway tile on CR 636(SA)
Installed 2 driveway tiles on CR 460(Hoss)

Ditch Work

- 9 dug out ditch on CR 912 (SA)
Dug out ditch on CR 243
Ditch CR 218 (JS)
- 10 ditch on CR 218(JS)
- 11 Ditch and clearing on CR 218(JS)
- 12 ditch and clearing on CR 218 (JS)
- 16 ditch on CR 604(Hoss)
Ditch on CR 218(Jim S)
- 17 ditch on CR 604 finished CR 460 started road work
- 18 ditch on CR 604(Hoss)
- 19 ditch on CR 604(Hoss)finished started on CR 460
- 23 ditch on CR 460(Hoss)
- 24 ditch on CR 460 (Hoss)(Dale)
- 25 ditch on CR 460(Hoss)(Dale)
- 26 ditch on CR 691(Dale)
Ditching on CR 460(Hoss)
- 30 ditch on CR 636(Dale)
Ditch on CR 460(Hoss) JS)

Wash Outs

- 9 fixed wash out on CR 815

Bridge Crew

Bono Lake, worked in concrete shop set up and poured panels

Asphalt

- 3 Atlas Asphalt CR 712
API CR 740
- 4 Atlas Asphalt CR 740 CR 324
- 5 Atlas Asphalt CR 333 CR 740 CR 324
- 16 Atlas Asphalt CR 757 CR 333
- 19 Atlas Asphalt CR 464
- 23 API CR 414
Atlas Asphalt –Miscellaneous roads
- 24 API CR 414
- 25 API CR 862

Mowing

Harold Bozarth

August 26	461	478	486	482	474	653	652
August 27	652	626	625	635	638	645	
August 29	638	636	615	612	422	620	
3	610	608	621	604	611	602	
4	903	703		706	back lot		
5	768	706	740	760	712		
9	745	763	765	736	733	942	773 (Allen B)
10	357	111	348	342	316(Allen B)		
11	342	312	348	315	317	372	374 (Mark H)
12	412	425	Valley View School				
16	425	419	410	409	414		
17	414	401	719	306	302	723	728 769
18	790	793	761	460	(Jerry F)		
19	761	793	799	796	789	787(Jerry F)	
23	773	757	777	775			
24	775	774	7743	751			
25	713	714	710	700	304	Caraway Lane	
26	360	304	320	339	337		
30	337	365	335	329	305	323	336 776 326

Carl & Gerald

3	900	910	903	745	Easley	Harvey Body Shop road
4	745	751(N&S)		730	mowed at shop	
5	mowed at shop					
16	328	341	399	398	N Main Bono	
17	380	383				
18	333N	Bono Lake				
19	333					

Moving Equipment

Brian Crews

5	moved tractor to CR 4191, Unit # 71 to ASU, small steel wheel roller to 701, big steel wheel to CR 701, hauled off dirt to Lawson, stripped off grass on driveway.
9	moved unit# 71 from CR 143 to CR 133 Moved unit # 35 to CR 218 Moved backhoe to Valley View School
10	moved unit 71 from CR 133 to CR 760 and loaded 2 culverts to CR 760 Cut tree on CR 133

- 11 moved grader to shop from CR 281 Jackson County line, got culvert from Scurlock, and moved 2 rollers, 1 wobble wheel to CR 476
- 12 moved unit # 71 to shop from CR 760, hauled culvert from Scurlock , moved dozer from Lake City dump to Caraway
- 16 moved unit # 71 from 760 to CR 604, moved dozer to McAfee gravel pit then to shop, moved unit # 35 exec to shop then to McAfee
- 18 moved unit # 26 exec to CR 460 from Spurlock pit
- 19 moved unit # 70 exec from Bono Lake to shop, Moved unit # 71 exec from CR 604 to CR 460, rubber tire exec to dirt pit, unit # 29 grader to shop
- 26 moved unit # 35 from McAfee pit to CR 460, moved unit # 26 from CR 460 to CR 691
- 30 MMOVED UNIT # 26 TO cr 638, MOVED TRACTOR FROM Valley View School to shop, moved 2 rollers from CR 476 to shop

Jim Summers

- 9 moved unit # 35 exec to CR 218 for ditching

Jeremy Dement

- 24 fixed 2 driveways and brought unit # 80 water truck in from CR 476 to shop

Misc.

Worked, cleaned up county equipment

Cleaned up offices and shop

Mowed county shop yard

Working in concrete shop

- 16 bus turn around on CR 318
- 19 filled in hole with 1 load chat on CR 846
- 23 repaired mail box on CR 683
- 26 opened and closed grave on Shilo Cemetery



Eugene Neff
Road Superintendent
EN/ca

**Grader& Mowing Report
September
2013**

John James – Cash Route

4	spread gravel on CR 281										
5	spread gravel on CR 281										
10	spread gravel on CR 281										
19	spread gravel on CR 281										
23	spread gravel on CR 281										
24	spread gravel on CR 281										
25	spread gravel on CR167 & CR 281					graded	280	281			
26	173	167	158	172	179	189	187	192	191	184	181

Mark Knight – Miscellaneous roads

4	helped put in cross drain at Valley View School											
5	helped Steve Allen install driveway tiles on 912 and 973											
9	graded on new road at Valley View											
16	helped spread chat at ASU and graded											
17	helped set up on CR 460											
18	worked on CR 460											
19	graded valley View School road, westside school							460	462	464		
23	607	612	608	617	624	619	621					
25	155	160	333									
26	173	168	157	167	172	177	179	189	184	199	185	180
	191	192	181	263	264							
30	255	246	243	268	271	270						

Gary Cox – Road building

3	CR 307
5	CR 307
16	CR 476
17	CR 476
18	CR 476
19	CR 476
23	CR 476
24	CR 476
25	CR 476
26	CR 476

Robert Anderson – Dixie Route

4	931	998	973	hailed gravel to Valley View					
16	spread gravel on 931								
17	graded	910	912	931	915	spread gravel on 931			915
23	998	999	997	994	995	990	973	934	
24	924	975	965	954	986	984	972	955	
25	956	958	938	963	957	936	937	947	925
26	906	912	910	909	907	927			
30	936	973	934	997					

JW Redding – Childress- Monette Route

9	spread gravel on 549			560						
10	shop									
11	565	575	585	564	516	831				
12	531	548	512	514	523	516	565			
16	504	535	502	543	549	506	545	560	567	559
17	558	563	562	544	553	542	538			
18	571	581	582	522	530	551	526	518		
19	546	540	532N	532S	528	524	520	548		
23	516	582	565	575	585	564				
24	546	514	523	515	512	533				
25	off									
26	591	544	553	542	538	571				
30	512	515	523	514	520	528	564	518		

Phillip Hurst – Caraway Route

12	500	510	509	508	556	883	554	864	
16	837S	841	890	880	855	882	876	854	
17	884	869	838	842					
18	862	859	850	844					
19	831	852							
23	832	834	847	853	836	547	556	583	554
24	513	509	510	512	508	831	837N		
25	867	860	866	868	874	878			
26	884	854	856	Hatchiecoon					
30	841	837	890	876					

Allen Biggers – Bay Route

11	652	618	813	802	815	fixed wash outs on 616								
12	674	634	645	636	638	635	615	607	616	626	Lillie Rd			
16	639	641	672	664	675	690	686							
23	683	655	686	693	682	650	648							
24	671	687	800	801	808	813	820	821	818	804	802	road at		
the Lake City shop														
25	688	815	809	824	822	819	817	823	812	810	660	691		
26	826	696	828	888	652	644	626	646	Thomas St		Paula St			
ball park														
30	680	681	spread gravel on 652			696	691							

Jeff Sanford & Curtis Sharp – Bono Route

12	Curtis	328	361	364	143	137S	124	125	137N	142	146	
17	Curtis	194	170	171	150							
18	Curtis	147S	159	144	341	399	398					
19	Curtis	308	378	333	326							
23	Curtis & Jeff		328	308	394	383	381	382	384	378	333	323
	336	334	330	3232	366	379	389	395	331	377	300	372
	374	317	376	357								
24	120	122	130	134	148	133	132	131	149	112	119	117
	111	101	338	369	341	313	309	316	348	315	361	380
	364	362	140	137N	147N	146	142					
25	159	144	194	170	171	165	152	150	100	spread gravel on 364		
	380											
26	137S	138	139	125	124	350	347	357	328	341	398	399
	308	326	367	775	774	7743	773					
30	150	181	180	171	170	194						

Steve Boyd – Mark Haines -Sterlings Springs

5	worked on 307											
9	work on 307											
10	work on 307											
11	work on 307											
12	worked on 701											
16	work on 476											
17	work on 476											
18	work on 476											
19	Work on 476											
23	patch black top											
24	931	979	969	977	993	991	989	987				
25	959	952	951	961	953	960	940	7676				
26	305	395	339	329	337	303	335	332	304			
30	773	774	7743	775	757	787	781	783	7808	789	798	
	778	785	772	771	769	7592	7593					

Bryan Tyler – Valley View Route

9	spread gravel on 233												
11	spread gravel at Valley View school road												
12	spread gravel at Valley View school road												
16	441	450	444	440	439	412							
23	102	104	108	109	200	201	202	213	209	218	210	227	208
	221	222	206										
25	423	410	452										
26	404	412	431	439	438	440	463	467	spread gravel on 460				
30	403	432	456	480	478	482	486	474	461	468	466	462	
	607	612	610										

Mowing

Timmy Gyngard

3	862	842	869	834	838	853	847						
4	847												
5	830	831	835	837	854	560	541	514	520	524	532		
9	540	528	531	540	546	544	538	553	542	548			
10	513	500	509	508	512	510	507						
11	516	582	565	575	585								
12	558	581	530	551	534	591	506	504	535				
16	559	567											
17	7922	950	951	943	951								
18	952	953	960	961	959								
19	969	970	963	928	687								
23	935	939	938	937	947	957							
24	973	977	979	970	991	931	999	998	995	926	990		
26	965	986	975	985									
27	984	986	944										
30	907	910	915										

Carl

23	318	305	339	337	365	335	Michael Hawkins road
24	W318	333	137				
25	118	worked on 460					
26	worked on 460						
30	118	127	132	Cotton Belt		147	

Craighead County Sheriff's Data through Sept 30, 2013

	June	July	Aug	Sept	Year to Date
Warrants Served	414	504	413	451	4873
Civil Papers Served	138	109	120	146	1120
Police Dispatch for Service	1684	1577	1699	1532	10,230
Deputy Transport Miles	5428	8669	9805	9294	65,011
Western Dist	June	July	Aug	Sept	Year to Date
Circuit Account	\$55,080.89	\$ 51,304.77	\$57,651.43	\$45,261.17	\$546,219.56
Fine and Bond	\$26,148.62	\$ 46,203.14	\$15,858.74	\$33,170.72	\$266,342.90
Civil Process	\$4,765.00	\$ 5,020.00	\$4,180.00	\$6,188.00	\$42,428.00
Gen Rcpts	\$4,725.00	\$ 6,225.00	\$4,415.00	\$3,780.00	\$41,916.00
Total Per Month	\$90,719.51	\$ 108,752.91	\$82,105.17	\$88,399.89	\$896,906.46
Eastern Dist					
Circuit Account	\$1,461.00	\$ 2,723.14	\$2,347.00	\$2,965.05	\$29,754.82
Civil Process	\$250.00	\$ 220.00	\$150.00	\$470.00	\$1,390.00
Total Per Month	\$1,711.00	\$ 2,943.14	\$2,497.00	\$3,435.05	\$31,144.82

Total West/East

Combined \$92,430.51 \$ 111,696.05 \$84,602.17 \$91,834.94 \$928,051.28

	July	Aug	Sept	Total
Inmates Booked into				
Detention Center to date	902	890	782	7470

Inmates Housed in
Detention Center today 330

Bailiff Transports	141	137	180	175	1203
Number of Courts	51	43	63	76	540
Video Court	20	42	22	19	157

Law Enforcement

	Year to Date
Fatalities	81

US Military Officer

	Year to Date
Fatalities	106

CURRENT YEAR				
DATE 2013	RECEIPT RANGE	DEPOSIT	CURRENT RECEIPTS	
SEPTEMBER				
	3 30370-30679	\$ 125,690.61	\$ 123,316.34	
	4 30680-31135	\$ 227,934.17	\$ 227,934.04	
	5 31136-31606	\$ 325,238.93	\$ 331,021.27	
	6 31607-31850	\$ 122,266.07	\$ 122,265.76	
	9 31851-32314	\$ 354,912.70	\$ 355,647.90	
	10 32315-32708	\$ 253,300.06	\$ 253,300.06	
	11 32709-32981	\$ 156,153.28	\$ 161,195.17	
	12 32982-33319	\$ 179,036.89	\$ 176,404.41	
	13 33320-33679	\$ 355,197.12	\$ 355,198.02	
	16 33680-34171	\$ 246,738.78	\$ 249,406.18	
	17 34172-34584	\$ 200,399.74	\$ 201,076.39	
	18 34585-35110	\$ 456,412.05	\$ 454,168.58	
	19 35111-35487	\$ 211,622.24	\$ 211,888.00	
	20 35488-35925	\$ 328,390.60	\$ 328,389.77	
	23 35926-36699	\$ 852,320.45	\$ 851,961.90	
	24 36700-37243	\$ 420,076.71	\$ 420,076.41	
	25 37244-37720	\$ 346,058.75	\$ 346,054.13	
	26 37721-38262	\$ 359,461.94	\$ 363,538.31	
	27 38263-38901	\$ 382,643.93	\$ 384,428.57	
	30 38902-39962	\$ 998,200.14	\$ 999,985.47	
	INTEREST \$555.02			
TOTAL		\$ 6,902,055.16	\$ 6,917,256.68	

DELINQUENT PERSONAL				
DATE 2013	RECEIPT RANGE	DEPOSIT	CURRENT RECEIPTS	
SEPTEMBER				
	3 197682-197715	\$ 3,739.09	\$ 3,739.09	
	4 197716-197730	\$ 573.74	\$ 573.67	
	5 197731-197751	\$ 1,178.17	\$ 1,178.17	
	6 197752-197770	\$ 1,765.19	\$ 1,765.19	
	9 197771-197806	\$ 3,227.65	\$ 3,227.66	
	10 197807-197826	\$ 2,163.22	\$ 2,163.22	
	11 197827-197835	\$ 560.68	\$ 560.68	
	12 197836-197843	\$ 681.68	\$ 681.68	
	13 197844-197857	\$ 1,292.63	\$ 1,292.63	
	16 197858-197877	\$ 1,946.26	\$ 1,946.26	
	17 197878-197890	\$ 997.17	\$ 997.17	
	18 197891-197907	\$ 1,140.42	\$ 1,140.42	
	19 197908-197920	\$ 1,189.50	\$ 1,189.50	
	20 197921-197939	\$ 2,580.43	\$ 2,580.43	
	23 197940-197955	\$ 1,975.85	\$ 1,975.85	
	24 197956-197964	\$ 1,155.27	\$ 1,155.27	
	25 197965-197978	\$ 1,307.75	\$ 1,307.75	
	26 197979-197996	\$ 1,042.36	\$ 1,035.80	
	27 197997-198010	\$ 1,450.57	\$ 1,450.57	
	30 198011-198037	\$ 3,249.44	\$ 3,075.02	
	INTEREST \$ 5.34			
TOTAL		\$ 33,217.07	\$ 33,036.03	

DELINQUENT REAL ESTATE				
DATE 2013	RECEIPT RANG	DEPOSIT	CURRENT RECEIPTS	
SEPTEMBER				
	3 66522-66537	\$ 2,404.69	\$ 2,404.69	
	4 66538-66542	\$ 2,951.44	\$ 2,951.44	
	5 66543-66553	\$ 1,641.45	\$ 1,641.45	
	6 66554-66562	\$ 13,584.76	\$ 13,584.76	
	9 66563-66571	\$ 2,966.51	\$ 2,966.51	
	10 66572-66574	\$ 1,511.86	\$ 1,511.86	
	11 66575-66576	\$ 117.70	\$ 117.70	
	13 66577-66580	\$ 9,353.90	\$ 9,353.90	
	16 66581-66589	\$ 18,171.44	\$ 18,171.68	
	17 66590-66593	\$ 2,701.87	\$ 2,701.61	
	18 66594-66600	\$ 1,570.07	\$ 1,570.07	
	19 66601	\$ 698.47	\$ 698.47	
	20 66602-66605	\$ 626.05	\$ 626.05	
	23 66606-66608	\$ 1,368.40	\$ 1,368.40	
	24 66609-66612	\$ 2,671.02	\$ 2,671.02	
	25 66613-66621	\$ 1,526.61	\$ 1,526.61	
	26 66622-66623	\$ 1,774.70	\$ 1,774.70	
	27 66624-66626	\$ 4,075.23	\$ 4,075.23	
	30 66627-66634	\$ 6,287.45	\$ 4,787.43	
	30 TEREST \$ 9.25			
TOTAL		\$ 76,003.62	\$ 74,503.58	

Appendix 4