

**Quorum Court Minutes**

**2/8/16**

**Appropriation Ordinance 2016-2 - PASSED**

**FILED**  
**FEB 11 2016**  
**KADE HOLLIDAY**  
**COUNTY & PROBATE COURT CLERK**

**AGENDA  
CRAIGHEAD COUNTY QUORUM COURT  
COMMITTEE MEETINGS  
FEBRUARY 08, 2016  
5:30 P.M.**

**Assembly and Prayer**

**Roll Call**

- A. An Appropriation Ordinance regarding special revenue funds; this transfer will reimburse county general funds for expenditures that have been already been paid from the county general fund.**

**Public Service Committee:**

- a. Discussion of current business.**

**Finance and Administration Committee:**

- a. Review of financial reports and other current business.**

**Roads and Transportation Committee Meeting:**

- a. County Road Superintendent Eugene Neff will update the committee concerning roads and bridges in the county.**

February 8, 2016

13 Justices of the Peace present.

Judge Ed Hill called the meeting to order.

---

Appropriation Ordinance 2016-2 was read – *Appendix 1*. Justice Billie Sue Hoggard moved to pass, Justice Barbara Weinstock seconded. Passed unanimously.

Justice Hoggard passed out a report written by her son Bill Hodges. The executive summary is an assessment of the county's data center that she urged the Court to review commenting that the recommendations made in the report need to be considered in a future meeting. The report was also given to the Information Technology Department for analysis.

Craighead County Data Center Executive Summary – *Appendix 2*.

Justice Hoggard commended Road Superintendent Eugene Neff on his department's assistance with CR 114 in regards to a dangerous curve in the road.

Judge Hill reminded the Court that the next meeting would be in Lake City at 6:00pm.

Justice Terry Couch moved to adjourn, Justice Richard Rogers seconded, all were in favor.

---

Also distributed to the Court was the Monthly Road Report – *Appendix 3*.

AN ORDINANCE APPROPRIATING FUNDS FROM SPECIAL REVENUE ACCOUNTS INTO COUNTY GENERAL FOR EXPENDITURES THAT HAVE ALREADY BEEN INCURRED AND PAID, AND DISBURSEMENTS BY THE COUNTY TREASURER TO FUND OTHER OFFICES AND DEPARTMENTS, AND TO TRANSFER COUNTY GENERAL AND SPECIAL REVENUE FUNDS AS NECESSARY.

SECTION 1. That Craighead County receives monies each year that are Special Revenue Account Funds. These special revenues are received from various sources and are used for funding some County offices.

SECTION 2. That section 2 of this Appropriation Ordinance is for the purpose of reimbursing County General Funds for expenditures that have already been expended for the operation of various offices and departments and transfers in amounts that are listed below for the calendar year 2015.

|                                                                                                                  | Transfer<br>Amount |
|------------------------------------------------------------------------------------------------------------------|--------------------|
| From Fund 3506 FEMA Emergency Food and Shelter Grant Fund to Fund 1000 County Gen(approving court order 2015-69) | \$875.40           |
| From Fund 3570 ADEM-Homeland security FY2014 Grant Fund to Fund 1000 County Gen(approving court order 2015-69)   | \$450.11           |
| From Fund 3574 General Improvement Grant Fund to Fund 1000 County Gen(approving court order 2015-69)             | \$13,050.16        |

SECTION 3. That section 3 of this Appropriation Ordinance is for the direct transfer of funds and amounts by the County Treasurer to the various agencies and departments listed below for the operation of those agencies and departments.

|                                           |                |
|-------------------------------------------|----------------|
| Fund 3008 Craighead County Public Library | \$808,614.18   |
| Fund 6400 Jonesboro Public Library        | \$2,348,407.41 |

SECTION 4. That section 4 of this Appropriation Ordinance is for the transfer of Administration of Justice

Funds and amounts to the agencies and departments listed below and approving court order transfers.

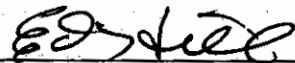
|                                                                                                                           |             |
|---------------------------------------------------------------------------------------------------------------------------|-------------|
| Fund 6498 Prosecutor's Victim/Witness Fund to Prosecuting Attorney(approving Ct order, dated 5-5-15, for dept operations) | \$34,491.50 |
|---------------------------------------------------------------------------------------------------------------------------|-------------|

SECTION 5. That section 5 of this Appropriation Ordinance is for the transfer of funds from fund to fund and approving court order transfers.

|                                                                                                                            |              |
|----------------------------------------------------------------------------------------------------------------------------|--------------|
| From Fund 1000 County Gen Fund to Fund 3020 Emergency 911 Fund(approving ct order 2015-69)(For support of dept operations) | \$190,000.00 |
| From Fund 1000 County Gen Fund to Fund 3568 Hazard Mitigation Project Grant Fund (approving ct order 2015-69)              | \$22,500.00  |
| From Fund 1000 County Gen Fund to Fund 3572 SAMHSA Adult Collaboration Grant Fund(approving ct order 2015-69)              | \$2,000.00   |
| From Fund 1000 County Gen Fund to Fund 3596 Sheriff Local Law Enforcement Block Grant Fund(approving ct order 2015-69)     | \$19.33      |

Be It Resolved by the Craighead County Quorum Court that these transfers be made and court order transfers be approved as described, by the Craighead County Treasurer, upon passage of this Appropriation Ordinance.

Dated This 8<sup>th</sup> Day Of February, 2016.

Approved: 

Ed Hill  
Craighead County Judge

Attest: 

Kade Holliday  
Craighead County Clerk

**FILED**  
**FEB 09 2016**  
**KADE HOLLIDAY**  
COUNTY & PROBATE COURT CLERK

## Craighead County Data Center Executive Summary December 2015

In December of 2015, a limited visual review was completed of the Craighead County Data Center, located in Jonesboro, Arkansas. The focus of the limited visual review was the physical components of the Data Center. The physical components of the data center include: electrical, mechanical, environment, security, construction, white space (racks) with some brief discussions of network and technology.

The review consisted of a walk around of the Data Center with Billie Sue Hoggard, IT Director, IT Technician

### Physical

The Data Center is approximately 240sqft. The space appears to be office space converted to Data Center space. The amount of space is adequate for current and future growth.

The IT racks are laid out in best practice design – hot/cold row; but the design effectiveness is limited in that the rows should be contained – there is space between the 2 racks and there is walk around space on the end closest to the supply area. It is recommended you replace the open spaces with 2 new APC racks, filled with blanking panels. This along with the recommended UPS, this will provide a industry standard Data Center best practice design for maximizing cooling efficiency and IT server performance.

It is also recommended for employee safety all racks be bolted to the floor as per code, APC recommendations.

In support of the IT rack hot/cold aisle containment design, the flow of air should be contained to the respective rows. The use of rack blanking panels is recommended to contain the hot and cold air in their respective rows.

The Data Center space includes a panel grid ceiling. A ceiling is not recommended for a Data Center. In this case, the ceiling is 8'. If a ceiling is wanted for some reason the standard is 9'. For this location, I would recommend the removal of the ceiling. This will increase the thermal capacity of the space (cooling recovery window) and eliminate the ongoing dust issue associated with aging ceiling tile. This also provides a visual of everything above the Data Center and provides ease of support for over head cabling. It is also recommended all unnecessary materials above the ceiling be removed – you want a Wal Mart appearance.

The Data Center floor is carpet – it is recommended this be removed and leave slab, sealed with anti static wax. Static electricity is a major concern in a Data Center.

The Data Center walls were not reviewed but they should be deck to deck and all opening properly fire stopped. The wall fire rating should be 1hr.

### Physical Recommendations:

- Install 2 new APC racks, filled with blanking panels; one for growth and one to close the space between the 2 racks
- Bolted all racks and future UPS to the floor
- Install blanking panels in existing racks
- Remove the ceiling
- Remove carpet, seal concrete with anti static wax
- Extend exterior walls – deck to deck – 1hr fire rating
- Reverse fire sprinklers
- Install drop pans under any plumbing above the DC space

## **Electrical**

The feedback indicated the Data Center was on emergency generator. It is recommended all infrastructures for the Data Center utilize generator supported power.

The current electrical infrastructure provides 120v power to the racks – with 3 power outlets visible above the racks. The IT hardware utilizes both 120v and 220/240v but in some cases newer hardware requires the 220/240 to utilize the hardware fully; each IT rack is supported by rack based 120v APC UPS unit.

Adequate grounding was not located. This is an employee, code issue. It is recommended ground to building steel with 6 gauge copper to the cable trays and each rack be installed.

It is recommended you convert the Data Center to 208v power with a centralized modular APC 20kw UPS/PDU. The 208v/3p modular UPS is more efficient, utilizes less floor space capacity and provides you a long term investment; with growth as needed. It is also recommended each rack include dual 50a 208 rack pdu's. The 50a rack pdu may be oversized but the cost is the same for a 30a rack and the 50a provides you capacity for 20yrs and will support any new technology.

Overall Data Center protection it is recommended an APC TVSS (surge suppression) be installed.

### **Electrical Recommendations:**

- Verify all Data Center infrastructure utilize generator emergency power; to include overhead lights
- Install ground bar to building steel
- Install grounding to each rack, cable tray with 6 gauge copper from ground bar
- Convert the Data Center to 208v 3p source power
- Install dual 50a 208 1p rack pdu's, per rack
- Install APC TVSS (surge suppression) on the panel supporting the Data Center

## **Mechanical**

The Data Center currently utilizes building supply air with manual backup cooling. In the past when building cooling was lost, it was noted the thermal capacity was less than 2 minutes – the time it takes the Data Center to rise from the standard of 74d F to above 90d F.

The current supply and exhaust vents location are noted and the current location is not consistent with the hot/cold aisle design – supply should be in the cold and the exhaust should be in the hot aisles.

It is recommended a dedicated 5ton wall mount cooling unit be installed for the Data Center. This is oversized but with proper maintenance, the life cycle for this air unit is 20yrs.

The return on the dedicated Data Center cooling infrastructure could be offset by the building energy savings by not running the building cooling units 24x7 year round.

### **Mechanical Recommendations:**

- Install dedicated 5ton wall mount cooling
- relocate current supply to front of racks
- relocate current exhaust to back of racks
- configure building air as backup to dedicated air; temp activated

## Monitoring/Security

All Data Centers must be monitored. The level of monitoring in place today is basic. It is recommended the APC ISX product be considered and installed. The base product provides a single pane for all monitoring verticals – temp, power, UPS, battery, surveillance, leak, etc. It can also be expanded to include building monitoring. If the APC ISX software is not possible, the current monitoring solution should be enhanced and surveillance added within the Data Center

### **Monitoring & Security Recommendations:**

- Install APC ISX Central base Data Center license
- Integrate all UPS power into the software – remote IDF's for any location
- Integrate Sheriff Data Center monitoring - remote IDF's for any location

## Future

As you consider investing in your IT infrastructure, the investment should align with your IT 5yr plan. The recommended investment will provide you a highly available best practice Data Center with capacity to consider alternatives. During the walk through it was noted the Sheriff department has their own IT department. The upgrades would provide you an option to consider consolidating and/or offer hosting services to other local governments in the state.

### **Future Recommendations:**

- Consider consolidating the multiple Data Centers in the county
- Consider offering hosting services to other county, city governments; migrate to a profit center hub; cost reduction, supported by Just In Time technical support
- Consider consolidating all local government agencies data centers into a joint collaborative entity; eliminate multiple IT contracts with different vendors, implement consistency, higher quality of IT with better funding; reduce over IT costs; cost reductions offset either each entity Data Center remediation costs or the local integration of all IT Data Centers and IT departments under the one joint entity
- Construct the joint collaborative entity to offer Data Center and IT services to other county and city governments and private companies – IT services would include local hosting for hardware, data, racks, applications, disaster recovery

## Technology

The technology hardware and software was noted during the walk through. The current hardware, software technology utilized is major brands and current – EMC for storage, Cisco for networking, Virtualization for virtual server and desktop.

### **Technology Recommendations:**

- Consider hosting your Data Center at a Hosting Provider Data Center – reduce current Data Center to a network hub; cost reduction, supported by Just In Time highly qualified technical support personnel, experts in each of the technologies in use; gain access to other technologies as needed; eliminate technology refresh cycles; migrate IT costs from capx to opsx

## **Standards**

The basic standard for a Data Center is the level of availability you desire thru risk avoidance. During the walk thru it was noted your current standard is N+1. With a standard of N+1, where you have an A and B, this standard must be carried through all aspects of the Data Center. The old saying is accurate, you are only as strong as your weakest link – an aspect of the Data Center where there is a single unit of anything is your weakest link and voids the time, effort, expense for N+1 in other areas.

### **Standards Recommendations:**

- Implement N+1 standard for all Data Center infrastructure
- Consider hosting your Data Center at a Hosting Provider Data Center – reduce current Data Center to a network hub; cost reduction, supported by Just In Time highly qualified technical support personnel, experts in each of the technologies in use; gain access to other technologies as needed; eliminate technology refresh cycles; migrate IT costs from capx to opsx

If you have any questions please let me know.

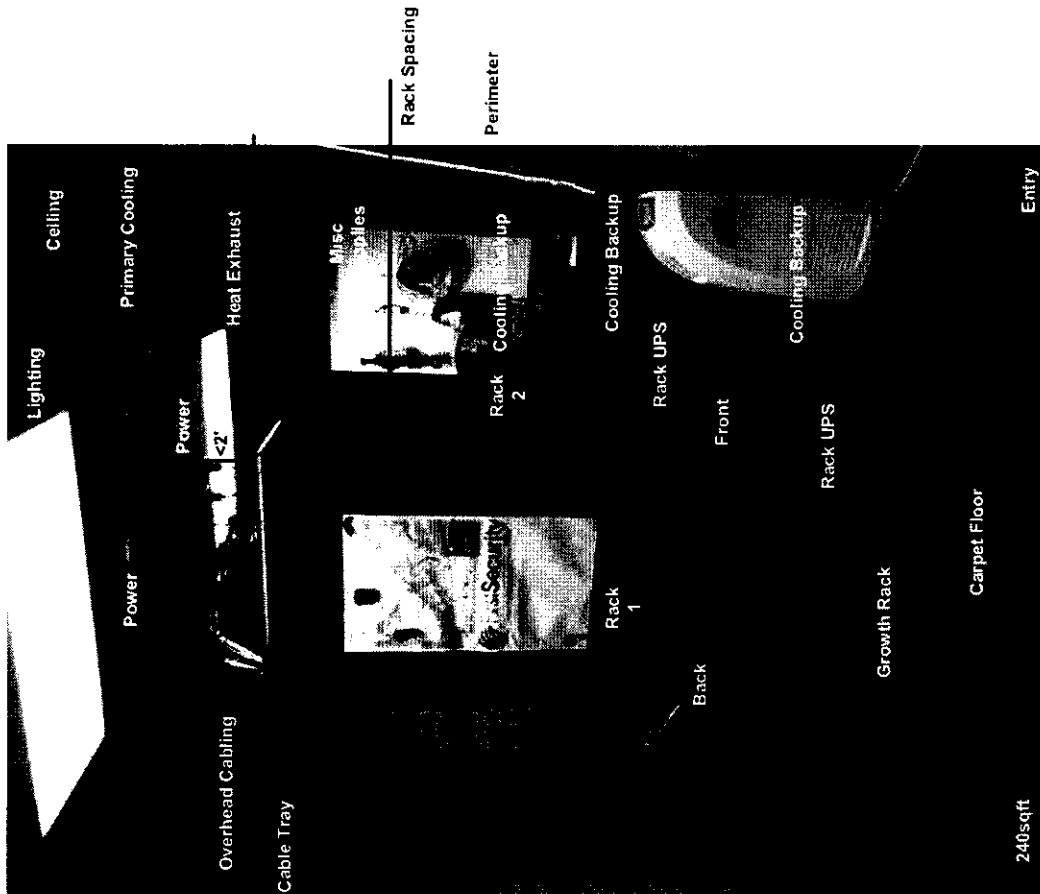
Bill Hodges  
Senior Technology Consultant  
Hodges Enterprises, LLC

---

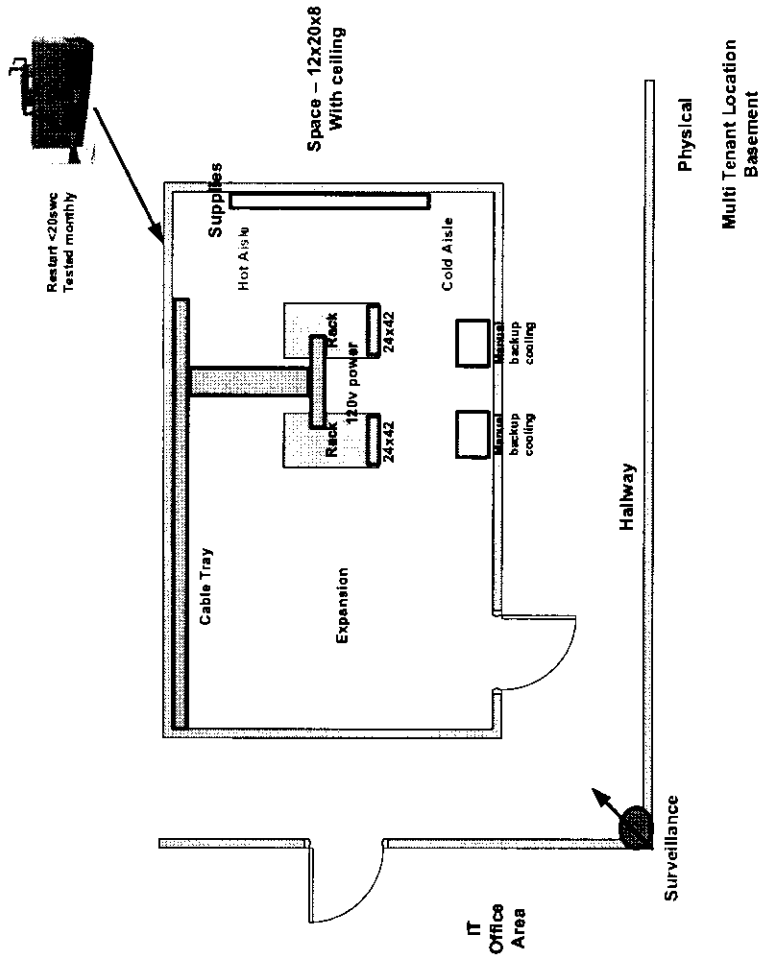


Craighead County Data Center Assessment  
December 2015 - Current

Current



Technology - current technology  
EMC storage, Cisco networking, APC UPS, 100/50 internet fiber, offsite manual backup Lake City, hosted application, virtualization, appli backup Little Rock, primary DC and Network MDF supporting county functions; does not include Sheriff IT



# Craighead County Data Center Remediation Future

## Remediation Assumptions

- Goal - High availability, efficiency, future proof, maximize investment, long term investment.
- Multi-tenant location, future proof, maximize investment, long term investment.
- Multi-tenant location, future proof, maximize investment, long term investment.
- Room temperature maintained at 74F
- Room support both network and server hardware
- Rack capacity required for refresh and growth
- Modular 20kw UPS/PDU frame, sized as needed, 20hr, 3p power
- Power and cabling overhead
- Blast floor, static was sealed
- TVSS installed to provide DC surge protection
- 20hr service to allow sufficient spacing at front and rear of racks and meet applicable code requirements.
- Racks include vertical cable management, vertical 20A rack ports.
- Thin patch cords will be used to maximize rack capacity and industry cable management standards will be followed
- Ceiling is removed to increase thermal capacity during a cooling restarts
- 20hr service to racks with redundant circuits via distribution panels (Power source "A" and source "B") Each circuit terminated to power bar mounted above the rack.
- 2 each APC Managed 50a vertical rack pdu's per rack, 10hr racks
- 1 APC AP7721 208V-15A Rack ATS installed in network rack
- APC Environmental Monitor installed to monitor room temperature, humidity and particulate.
- APC Surveillance Monitoring installed to monitor room access door and front and rear of racks.
- Facility Access control system to be installed to restrict personnel access to the DC. Card reader to be installed next to DC access door.
- DC is an emergency generator backup power.
- DC cooling infrastructure is dedicated and supported by emergency generator backup power.
- DC has redundant cooling - leveraging building cooling, and/or manual units; projected thermal capacity is 45 minutes
- Racks are bolted to the floor following proper procedures
- Generator and DC follower is tested monthly
- Generator start up <20sec; long term running, 24hr fuel; serviced monthly
- DC cooling infrastructure maintenance, quarterly
- Fire protection infrastructure <10hrs old, services annually; leverage building system
- DC EPO installed

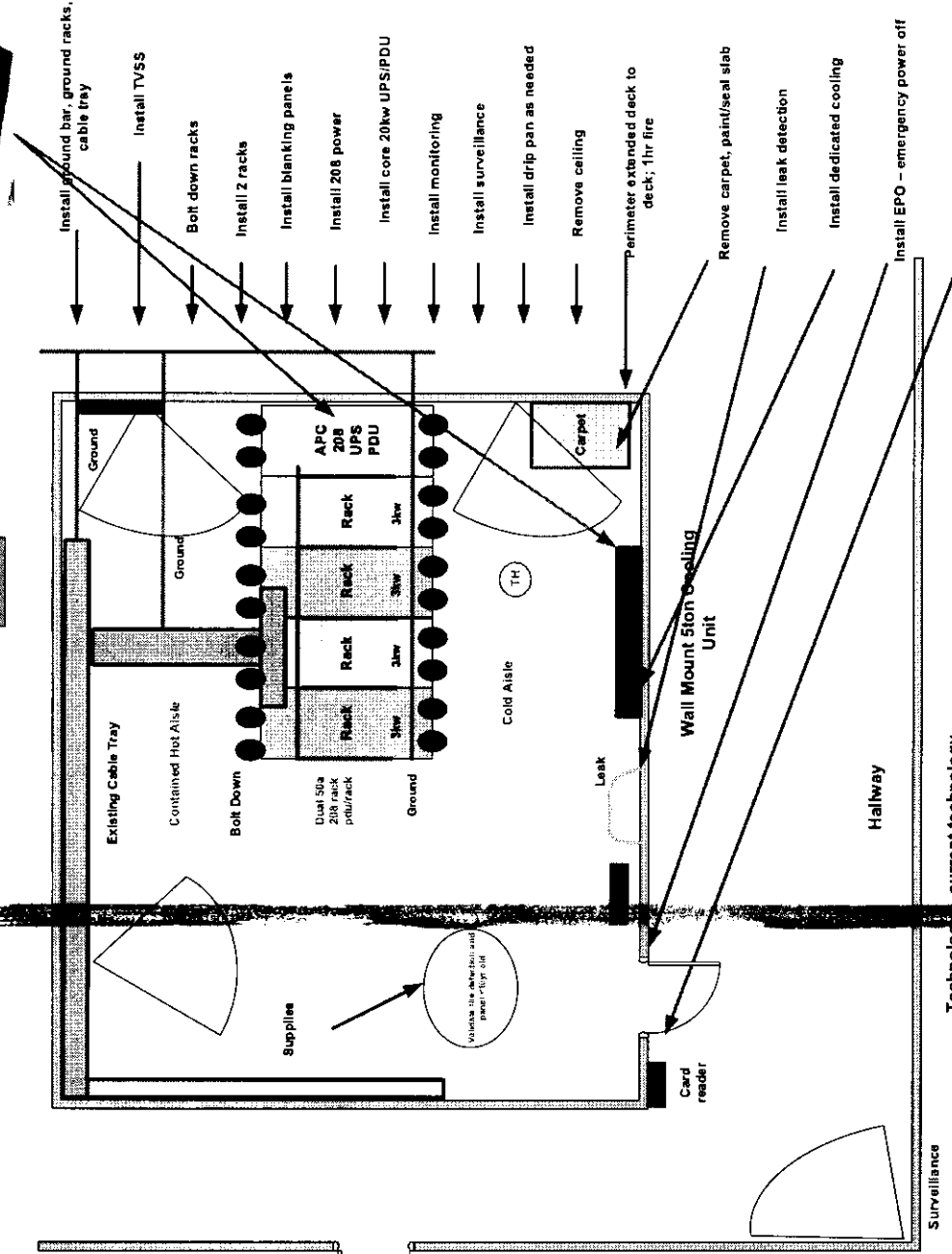
## IT Office Area

- PDU breaker capacity
- UPS capacity
- Rack capacity
- Dedicated cooling
- Cooling capacity
- Facility cooling efficiency
- Maximize hardware investment utilization - 20hr
- Implement N+1 redundancy - N+1 standard, leverage Facility cooling as backup
- Maximize floor utilization
- Leverage Facility physical security, generator, fire
- External maintenance contracts - cooling, UPS, fire
- Leverage APC power distribution, limit dedicated power
- Centralized APC UPS, eliminate rack based 120v UP
- Single pane monitoring solution - APC - power, cooling, environment, surveillance, capacity
- Minimize impact to overall Facility
- Provides capacity for county consolidation
- Provides capacity for hosting other county IT services
- Provides foundation for external hosting considerations

## Data Center

- Infrastructure Life Cycle Investment
- Perimeter Cooling - 15yrs with maintenance
- UPS PDU - modular - 20yr with maintenance
- Rack - 15yr - 20yr average 4yr, with consistent environment
- Rack PDU - 20yr
- Rack power white - 20yr
- PDU breakers - 20yr
- TVSS - 20yr
- Ceiling tile - 10yr
- Fire Action fire protection - 20yr with maintenance
- Fire Detection panel - 10yr
- Smoke Detection - 10yr
- Monitoring Station - 15yr
- Generator 20yr

## Physical Multi Tenant Location Basement



- Install ground bar, ground racks, cable tray
- Install TVSS
- Bolt down racks
- Install 2 racks
- Install blanking panels
- Install 208 power
- Install core 20kw UPS/PDU
- Install monitoring
- Install surveillance
- Install drip pan as needed
- Remove ceiling
- Perimeter extended deck to deck; 1hr fire
- Remove carpet, paint/seal slab
- Install leak detection
- Install dedicated cooling
- Install EPO - emergency power off
- Install card reader
- current technology
- 100/50 Internet fiber, offsite manual backup Lake
- backup Liftie Rack, primary DC and Network MDF
- supporting county functions does not include Sheriff IT



**Craighead County  
Highway Department**  
2800 Moore Road  
Jonesboro, AR 72401  
870-933-4510



**Road Report  
January  
2016**

During the month of January a total number 2,011 yards of gravel from Spurlock, a total 2,852.12 tons of slag was hauled from Phoenix, a total 252.59 tons of chat from Bradley and a total number 226.98 tons of sand from Drum Sand and Gravel was hauled to the following locations:

**East**

|     |     |     |     |     |     |     |     |     |     |     |     |     |
|-----|-----|-----|-----|-----|-----|-----|-----|-----|-----|-----|-----|-----|
| 884 | 878 | 907 | 639 | 963 | 815 | 809 | 804 | 825 | 683 | 686 | 910 | 936 |
|     | 959 | 608 | 607 | 907 | 545 | 859 |     |     |     |     |     |     |

A total number 522 yards of gravel was hauled to the eastern district.

**West**

|     |     |     |      |     |      |     |     |     |     |     |     |
|-----|-----|-----|------|-----|------|-----|-----|-----|-----|-----|-----|
| 159 | 197 | 787 | 7629 | 192 | 328  | 398 | 376 | 187 | 110 | 194 | 267 |
| 468 | 441 | 460 | 307  | 187 | shop | 140 | 323 | 336 | 361 |     |     |

A total number 1453 yards of gravel was hauled in the western district.

**20<sup>th</sup> 21<sup>st</sup> 22<sup>nd</sup> ICE ICE ICE**

Road crew out spreading sand on various roads

**Ditches**

- 5 ditch dug on 698 (Dale)  
Ditch work on 357(Jim)
- 6 ditch 608(Jim)  
Ditch 607(Hoss)  
Ditch 698 (Dale)
- 7 ditch 765 (Hoss)
- 11 ditch 763(Hoss)  
Ditch on 698(Dale)
- 12 ditch on 763 (Hoss)  
Ditch on 907 & wash out (Dale)
- 13 ditch on 698 (Dale)  
Ditch on 765 (Hoss)  
Ditch on 698(Dale)
- 14 ditch on 698 (Dale)

- 19 ditch on 187(Jim)  
Ditch on 452(Hoss)  
Ditch on 698(Dale)
- 25 ditch on 187(Jim)  
Ditch on 159 & 452 (Hoss)
- 26 Ditch on 184(Jim)  
Ditch on 452(Hoss)
- 27 ditch on 187(Jim & Hoss)  
Ditch on 673(Dale)
- 28 Ditch on 328(Jim)  
Ditch on 360(Hoss)  
Ditch on 655 (Dale)

**Tiles (All tiles are on county right-of-way)**

- 5 covered driveway tile on 808
- 6 unstopped tile on 468
- 7 covered driveway tile on 876  
Unstopped tiles on 476 428
- 11 installed driveway tile on 7629 and 7628
- 12 lowered tile on 342  
Covered driveway tile on 348  
Unstopped driveway tile on 315  
Fix hole in tile on 192
- 13 extension on tile on 928
- 14 tile installed on 192- 36x43  
Tile installed on 229 24x20 both were county
- 19 Tile on 106
- 26 Cleaned out tile on 440
- 28 installed county tile on 338 it was an 18x40  
Installed county tile on 338 it was a 24x40  
Driveway tile on 130  
Covered tile on 910

**Wash Outs**

- 5 357
- 6 fixed wash out on end of tile on 120
- 7 wash out on 460
- 12 912 423 308
- 13 616
- 14 407 304 407 7291 192 639 111 766
- 19 545 639 192 194 338 106 304  
714 480
- 25 859
- 26 140 478 648

**Asphalt Work**

|    |                   |     |     |     |     |     |     |         |
|----|-------------------|-----|-----|-----|-----|-----|-----|---------|
| 5  | cold patch on 793 | 755 | 791 | 757 | 730 | 752 | 318 | 741     |
| 6  | 607 307           |     |     |     |     |     |     |         |
| 7  | cold patch 113    | 311 | 945 | 928 | 353 |     |     |         |
| 11 | cold patch        | 114 | 204 | 250 | 311 | 505 | 425 | 414 714 |
| 27 | cold patch 114    |     |     |     |     |     |     |         |
| 28 | cold patch 187    |     |     |     |     |     |     |         |

**Beaver Dam**

|    |         |
|----|---------|
| 5  | 852     |
| 12 | 192     |
| 13 | 171 (3) |
|    | 197     |

**Equipment**

|    |                                                |     |     |     |  |
|----|------------------------------------------------|-----|-----|-----|--|
| 11 | MB # 57 hauled #26 exec from 698 to 907        |     |     |     |  |
| 12 | MB # 57 hauled # 26 back to 907 to repair tile |     |     |     |  |
| 13 | MB #57 loaded tile to move to Egypt            |     |     |     |  |
| 28 | MB Hauled misc. equipment to 328               | 160 | 938 | 664 |  |

**Mowing**

|        |     |     |     |     |     |      |     |
|--------|-----|-----|-----|-----|-----|------|-----|
| Harold |     |     |     |     |     |      |     |
| 5      | 648 | 945 | 928 | 730 | 755 |      |     |
| 6      | 755 | 757 | 309 | 304 |     |      |     |
| 7      | 323 | 366 | 324 | 360 | 319 | 304  |     |
| 11     | 318 | 333 |     |     |     |      |     |
| 12     | 333 |     |     |     |     |      |     |
| 13     | 380 | 381 | 194 |     |     |      |     |
| 14     | 192 | 199 | 132 | 127 |     |      |     |
| 19     | 203 | 202 | 204 | 241 |     |      |     |
| 25     | 241 | 250 | 270 | 204 |     |      |     |
| 26     | 204 | 202 | 209 | 452 | 423 | 412  | 425 |
| 27     | 410 | 425 | 408 | 409 | 407 | 4191 |     |
| 28     | 428 | 411 | 403 | 406 | 476 |      |     |

**Signs**

- 5 repaired Stop sign on 4191
- New 911 sign 423/425
- Repaired Blue sign Hwy18/505
- Hwy18/835
- Repaired Left Curve on 505
- Repaired right curve on 505

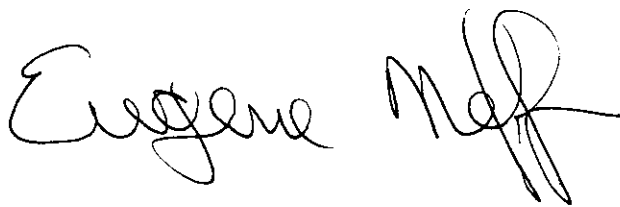
- 6 (1) Left (2) right bridge signs on 762  
New 911 sign 762/762  
(2) Right bridge signs on 928  
(2) Left bridge signs on 928  
Repaired 911 sign on 988/995
- 7 repaired 40 MOH sign on 241  
New 22 ton weight limit sign on 766  
(2) 30 MPH signs on 741  
(2) Right (1) Left bridge signs 905  
Repaired 40 MPH sign 241
- 11 repaired blue sign Hwy 18/509  
Hwy 18/831  
Hwy 148/839  
959  
Repaired Stop sign 912/906  
938/963  
Repaired Stop ahead sign 900  
Repaired 911 sign on 884/866  
906/945  
977/979  
New 911 signs 865/844  
965/956  
Repaired 25 MPH sign on 977  
Repaired 35 MPH sign on 903  
New right (2) left (2) bridge signs
- 12 new arrow sign on 414/409  
New stop sign on 414  
New RxR signs (2) 428
- 13 repaired 911 CR 197/189
- 19 new blue sign on Hwy 226 /197  
Hwy 226/189  
Hwy 226/177  
Hwy 226/233  
Hwy 226/179  
Hwy 226/237  
Hwy 226/241  
Hwy 226/264(2)

**Misc.**

Worked on county equipment, cleaned shop, straighten up stockpile, hauled material to several locations and to stockpile, ditch work, tile work welding, mowing, prep. Concrete bridges for painting Inspection bridges thru out the county. Repairing signs.

- 5 removed mud from sides of road on 793 and hauled off  
Hauled 2 loads dirt to Bay for the sewer pond

- 6 cleaned off 8 box culverts to paint on 425  
Sweep apron on 109  
Dug out sump in road on 607  
Picked up couch on 575
- 9 Bridger road cut tree off of road (SS)
- 11 tree removal on 745  
Brush to pit from 763
- 12 built lid for tile on 907  
Painting bridge or box culverts on 425
- 13 painting bridge or box culverts on 425
- 14 shoulder work on 755 766
- 19 prep., graders plow trucks and pick-up trucks for inclement weather  
Removed low hanging limb from tree on 439  
Spread slag on bus turn around on 338
- 21 hauled 1 load sand for the City of Bono  
Hauled 2 loads sand to shop
- 22 put sand out on various roads and intersections  
Moved tree off road on 106, off Old Bay Hwy, and off of 817  
Reported electrical line across road on 652
- 25 moved brush off of 187
- 26 stumps from 187 to Spurlock pit  
6 loads slag hauled to the City of Monette  
Cleaned sands off intersection  
Sweep off several bridges from storm sand at these intersections 403/476 Hwy163/618  
403/4035 406/403 464/403 333/318 318/353 353/333
- 27 patched blacktop on 114  
Tree removal 187



Eugene Neff  
Road Superintendent  
EN/ca

**Grader Report  
January  
2016**

**Allen Biggers – Bay Route**

|    |     |     |          |           |                      |          |     |           |           |     |     |     |
|----|-----|-----|----------|-----------|----------------------|----------|-----|-----------|-----------|-----|-----|-----|
| 5  | 824 | 821 | 820      | 812       | 696                  | 826      | 810 | 660       | 828       | 681 | 638 | 636 |
|    | 645 | 808 |          |           |                      |          |     |           |           |     |     |     |
| 6  | 691 | 680 | 681      | 698       | 679                  | 644      | 646 | 652       | 645       |     |     |     |
| 7  | 910 | 909 | 906      | 912       | 907                  | 915      |     |           |           |     |     |     |
| 12 | 626 | 652 | 625      | 618       | 653                  | 615      |     |           |           |     |     |     |
| 13 | 634 | 607 | 616      | 635       | 636                  | 638      | 645 |           |           |     |     |     |
| 25 | 634 | 639 | 641      | 664       | 672                  |          |     |           |           |     |     |     |
| 26 | 648 | 650 | 655      | 675       | 672                  | 690      | 683 | Cooper Rd | Lillie Rd |     |     |     |
| 27 | 809 | 686 | 815      | 683       | spread gravel on 815 |          |     | 616       | 618       | 683 | 809 | 686 |
| 28 | 693 | 682 | 671      | 687       | 800                  | 808      | 813 | 821       | 818       | 816 | 822 | 824 |
|    | 810 | 660 | Paula St | Thomas St |                      | Ballpark |     |           |           |     |     |     |

**Mark Knight – Cash Route**

|    |                         |            |                 |     |     |     |  |  |  |  |  |  |
|----|-------------------------|------------|-----------------|-----|-----|-----|--|--|--|--|--|--|
| 5  | 160                     | 155        |                 |     |     |     |  |  |  |  |  |  |
| 6  | Spread gravel on 197    |            | spread chat 267 |     |     |     |  |  |  |  |  |  |
| 7  | New Blades              | graded 277 |                 | 270 | 267 |     |  |  |  |  |  |  |
| 11 | flowed the mower on 318 |            |                 |     |     |     |  |  |  |  |  |  |
| 13 | 194                     | 191        | 192             | 187 | 181 | 199 |  |  |  |  |  |  |
| 14 | 187                     | 189        | 197             |     |     |     |  |  |  |  |  |  |
| 20 | spread sand cash        |            |                 |     |     |     |  |  |  |  |  |  |
| 21 | ice                     |            |                 |     |     |     |  |  |  |  |  |  |
| 22 | spread sand             |            |                 |     |     |     |  |  |  |  |  |  |
| 27 | 281                     | 189        | 197             |     |     |     |  |  |  |  |  |  |
| 28 | spread gravel on 187    |            |                 |     |     |     |  |  |  |  |  |  |

**Steve Boyd \_ Sterlings Springs Route**

|    |                                |     |     |      |     |     |     |     |     |
|----|--------------------------------|-----|-----|------|-----|-----|-----|-----|-----|
| 5  | 773                            | 774 | 775 | 7743 | 757 | 777 | 786 | 787 | 781 |
| 6  | 796                            | 795 | 799 | 797  | 793 | 790 | 761 | 763 | 765 |
| 7  | 712                            | 746 | 740 | 741  | 703 | 751 |     |     |     |
| 12 | 714                            | 700 | 710 | 713  | 306 | 302 |     |     |     |
| 13 | 773                            | 774 | 775 | 777  | 787 | 781 |     |     |     |
| 14 | 789                            | 798 | 745 | 785  | 769 | 771 |     |     |     |
| 19 | throwing out sand on icy roads |     |     |      |     |     |     |     |     |
| 21 | throwing out sand on icy roads |     |     |      |     |     |     |     |     |
| 25 | 773                            | 774 | 775 | 7743 | 757 | 777 | 787 |     |     |
| 26 | 796                            | 795 | 797 | 793  | 740 | 761 | 763 |     |     |



|    |     |     |     |     |     |     |     |     |  |  |  |  |
|----|-----|-----|-----|-----|-----|-----|-----|-----|--|--|--|--|
| 27 | 765 | 712 | 741 | 740 | 746 | 703 | 706 |     |  |  |  |  |
| 28 | 768 | 771 | 769 | 728 | 726 | 729 | 789 | 798 |  |  |  |  |

**Mark Haines & Jeff Sanford – Bono Route**

|    |     |      |         |                                           |     |                      |     |     |     |                            |                         |     |
|----|-----|------|---------|-------------------------------------------|-----|----------------------|-----|-----|-----|----------------------------|-------------------------|-----|
| 11 | 383 | 394  | 308     | 398                                       | 341 |                      |     |     |     |                            |                         |     |
| 12 | 124 | 125  | 137     | 148                                       | 133 | 132                  | 112 | 119 | 117 | 111                        | 191                     | 338 |
|    |     | 339  | 342     | 313                                       | 316 | 315                  |     |     |     |                            |                         |     |
| 13 | 364 | 380  | 362     | 326                                       | 379 | 3335                 | 369 | 367 | 336 | spread slag on 361 and 323 |                         |     |
| 14 | 339 | 337  | 335     | 329                                       | 305 | 303                  | 396 | 360 | 322 | 320                        | 4381 spread slag on 111 |     |
| 25 | 328 | 398  | 159     | 147N                                      | 144 | 142                  | 137 | 140 | 194 | 170                        | 171                     |     |
| 26 | 150 | 152  | 147     | 149                                       | 131 | 133                  | 132 | 119 | 117 | 101                        | 124                     | 125 |
|    |     | 137N | Redwood | 326                                       | 323 | 333                  | 365 | 365 | 369 | 339                        | 337                     | 334 |
|    |     | 304  | 326     | 323                                       | 100 | spread chat on 140   |     |     |     |                            |                         |     |
| 27 | 308 | 383  | 394     | spread gravel on 328 ,398, 361, 398,& 328 |     |                      |     |     |     |                            |                         |     |
| 28 | 384 | 381  | 382     | 308                                       | 378 | 326                  | 377 | 380 | 384 | 329                        | 335                     | 305 |
|    | 303 | 396  | 317     | 348                                       | 150 | spread gravel on 194 |     |     |     |                            |                         |     |

**Bryan Tyler – Valley View Route**

|    |     |     |                    |     |     |     |                    |     |     |     |     |     |
|----|-----|-----|--------------------|-----|-----|-----|--------------------|-----|-----|-----|-----|-----|
| 5  | 607 | 608 | 617                | 619 | 604 | 602 | 611                | 621 |     |     |     |     |
| 6  | 102 | 104 | 108                | 109 | 202 | 213 | spread chat on 441 |     |     |     | 468 |     |
| 11 | 218 | 227 |                    |     |     |     |                    |     |     |     |     |     |
| 12 | 452 | 408 | 410                | 423 |     |     |                    |     |     |     |     |     |
| 13 | 441 | 440 | 439                | 438 | 412 | 444 |                    |     |     |     |     |     |
| 14 | 209 | 206 | 451                | 403 | 456 | 478 | 461                | 482 | 486 | 474 | 461 | 442 |
|    | 450 |     |                    |     |     |     |                    |     |     |     |     |     |
| 25 | 607 | 612 | 608                | 617 | 619 | 604 | 602                | 611 | 621 | 430 | 429 | 460 |
|    | 463 | 467 |                    |     |     |     |                    |     |     |     |     |     |
| 26 | 403 | 456 | 478                | 482 | 486 | 474 | 405                | 461 | 442 | 468 | 472 | 464 |
|    | 466 | 462 | spread slag on 478 |     |     |     |                    |     |     |     |     |     |
| 27 | 452 | 423 | 441                |     |     |     |                    |     |     |     |     |     |
| 28 | 450 | 444 | 221                | 222 |     | 211 | 208                | 218 | 227 | 209 | 210 | 213 |
|    | 451 |     |                    |     |     |     |                    |     |     |     |     |     |

**Curtis Sharp –Needham Route**

|    |     |     |     |                      |     |     |             |     |      |     |  |  |
|----|-----|-----|-----|----------------------|-----|-----|-------------|-----|------|-----|--|--|
| 12 | 910 | 915 | 912 | 925                  | 937 |     |             |     |      |     |  |  |
| 13 | 938 | 963 | 735 | 738                  | 733 | 942 | 952         | 953 | 940  | 960 |  |  |
| 25 | 912 | 910 | 909 | 907                  | 906 |     |             |     |      |     |  |  |
| 26 | 965 | 938 | 973 | 997                  | 995 | 999 |             |     |      |     |  |  |
| 27 | 937 | 947 | 925 | 951                  | 943 | 952 | 953         | 940 | 7676 |     |  |  |
| 28 | 963 | 959 | 960 | spread gravel on 959 |     |     | slag on 947 |     |      |     |  |  |

**J.W. Redding – Childress Route**

|    |                                            |     |     |     |                       |     |                    |     |     |     |
|----|--------------------------------------------|-----|-----|-----|-----------------------|-----|--------------------|-----|-----|-----|
| 5  | 512                                        | 515 | 514 | 523 | 531                   | 548 | 540                | 532 |     |     |
| 6  | 524                                        | 582 | 516 | 565 | 575                   | 585 | 581                | 564 |     |     |
| 7  | 522                                        | 526 | 518 | 571 | 581                   | 582 |                    |     |     |     |
| 11 | 543                                        | 549 | 560 | 558 | 563                   | 562 | 559                | 524 |     |     |
| 12 | 544                                        | 542 | 553 | 538 | drained water off 591 |     |                    |     |     |     |
| 13 | 571                                        | 518 | 530 | 581 | 582                   | 525 | 546                | 506 |     |     |
| 14 | spread slag on 545                         |     |     |     |                       |     |                    |     |     |     |
| 20 | throwing sand out at several intersections |     |     |     |                       |     |                    |     |     |     |
| 21 | throwing sand out at several intersections |     |     |     |                       |     |                    |     |     |     |
| 22 | throwing sand out at several intersections |     |     |     |                       |     |                    |     |     |     |
| 25 | 512                                        | 515 | 514 | 523 | 531                   | 548 | 546                | 540 | 532 |     |
| 27 | 502                                        | 535 | 504 | 543 | 549                   | 506 | 546                | 560 | 559 | 567 |
| 28 | 558                                        | 563 | 562 | 565 | 585                   | 564 | spread slag on 548 |     |     |     |

**Phillip Hurst – Caraway Route**

|    |     |     |     |                                    |     |     |     |     |     |     |     |
|----|-----|-----|-----|------------------------------------|-----|-----|-----|-----|-----|-----|-----|
| 5  | 512 | 513 | 508 | 509                                | 500 | 556 | 583 | 554 | 847 |     |     |
| 6  | 882 | 855 | 878 | gravel 884                         |     |     |     |     |     |     |     |
| 7  | 867 | 860 | 861 | 878                                | 874 | 868 |     |     |     |     |     |
| 12 | 862 | 859 | 858 | 850                                | 869 | 844 | 842 | 838 | 834 | 852 | 856 |
| 13 | 830 | 831 | 837 | Courtesy grade Caraway School road |     |     |     |     |     |     |     |
| 25 | 509 | 500 | 508 | 512                                | 513 | 510 | 831 | 837 |     |     |     |
| 26 | 837 | 841 | 890 | 882                                | 876 | 878 | 864 | 852 | 856 |     |     |
| 27 | 850 | 862 | 858 | 859                                | 556 | 583 | 554 | 834 | 836 | 840 | 854 |
| 28 | 547 | 847 | 832 | 853                                | 836 | 838 | 842 | 869 | 844 |     |     |

**Robert Anderson – North of Highway 18**

|    |     |                                               |     |     |                      |                      |     |                                 |     |                                             |  |  |
|----|-----|-----------------------------------------------|-----|-----|----------------------|----------------------|-----|---------------------------------|-----|---------------------------------------------|--|--|
| 12 | 906 | 965                                           | 985 | 984 | 955                  | 962                  |     |                                 |     |                                             |  |  |
| 13 | 975 | 907                                           | 909 | 981 | 915                  |                      |     |                                 |     |                                             |  |  |
| 14 | 639 | 999                                           | 985 | 995 | 997                  | 990                  |     |                                 |     |                                             |  |  |
| 25 | 975 | 955                                           | 986 | 985 | 984                  | 962                  | 956 | 906 down to 912                 |     | 955to 965                                   |  |  |
| 26 | 687 | (965 Curtis pulled it Robert knocked it down) |     |     |                      | 954                  | 998 | 997                             | 994 | (Pulled up 995, 973 Curtis knocked it down) |  |  |
| 27 | 934 | 931                                           | 983 | 969 | 970                  | spread gravel on 936 |     | (936 TO 963) knocked down ½ 997 |     |                                             |  |  |
| 28 | 936 | 963 to 937                                    |     | 957 | spread gravel on 936 |                      |     |                                 |     |                                             |  |  |

**Glen Graham – Misc.**

|   |                    |  |  |  |  |  |  |  |  |  |  |
|---|--------------------|--|--|--|--|--|--|--|--|--|--|
| 7 | spread chat on 608 |  |  |  |  |  |  |  |  |  |  |
|---|--------------------|--|--|--|--|--|--|--|--|--|--|